

One Way Restrictor NG 6 ISO 4401 Technical Data Sheet



Technical Data

General

Type of valve	gap throttle
Mounting method	sandwich plate
Port connection	manifold
Mounting position	mountable in any position
Ambient temperature	-5 to +50 °C
Mass valve	1 kg

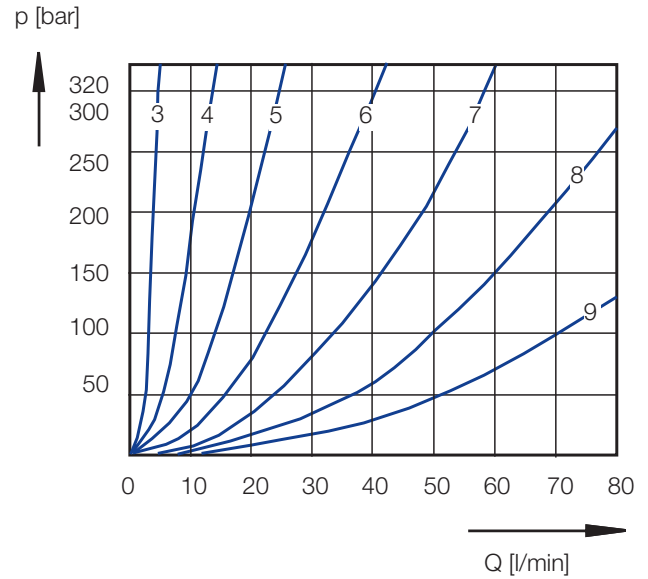
Hydraulic

Operation pressure	max. 320 bar
Hydraulic oil temperature	-10 to +70 °C
Viscosity range	10 bis 300 mm ² /s

Options

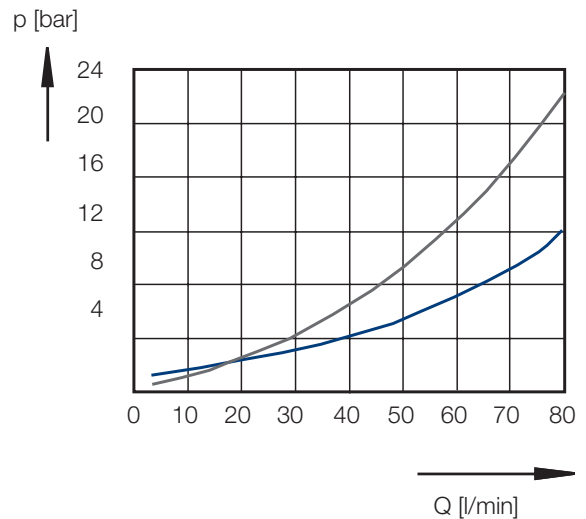
- compact design
- sensitive adjustment

Characteristic Curve, Throttle Valve



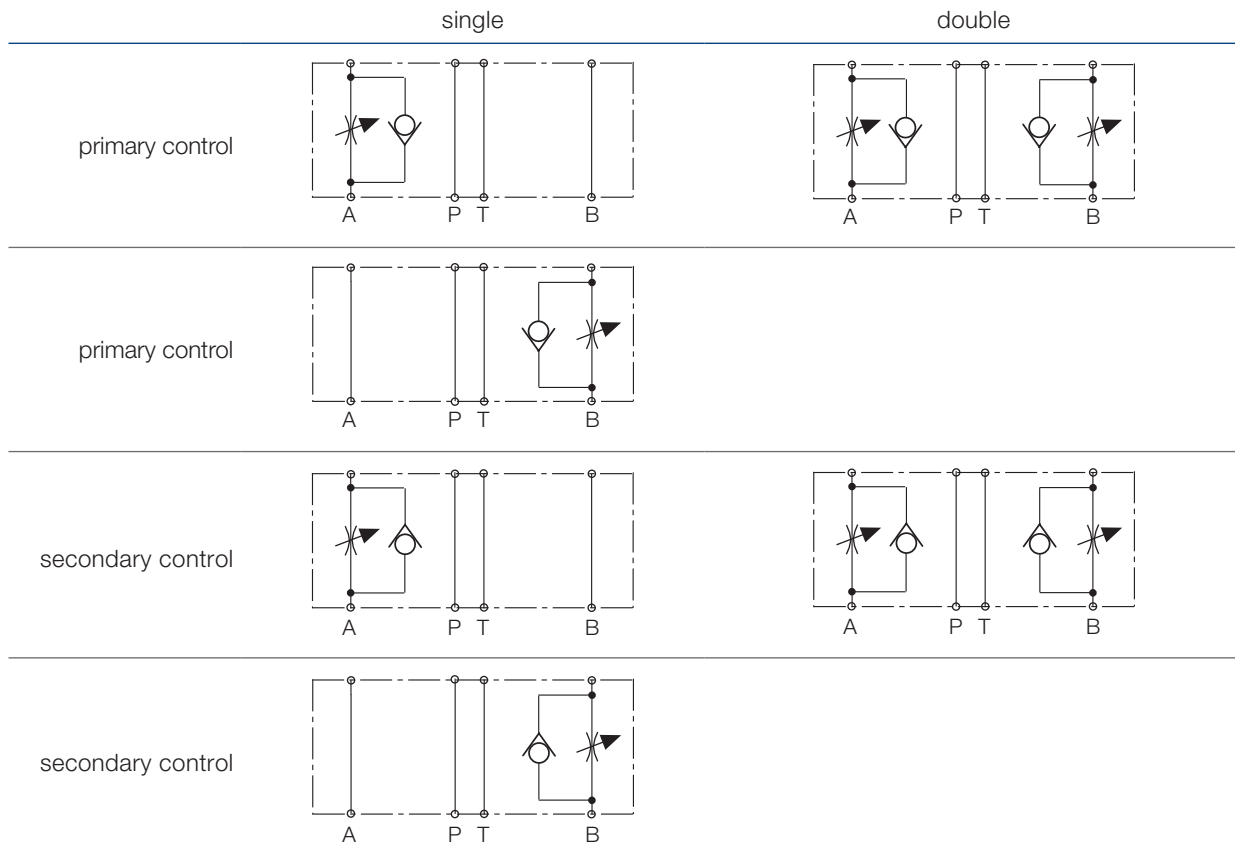
curves 3 to 9, throttle setting in revolutions,
hydraulic oil 35 mm²/s, 50°C

Characteristic Curve, Check Valve



throttle opened —
throttle closed —
hydraulic oil 35 mm²/s, 50°C

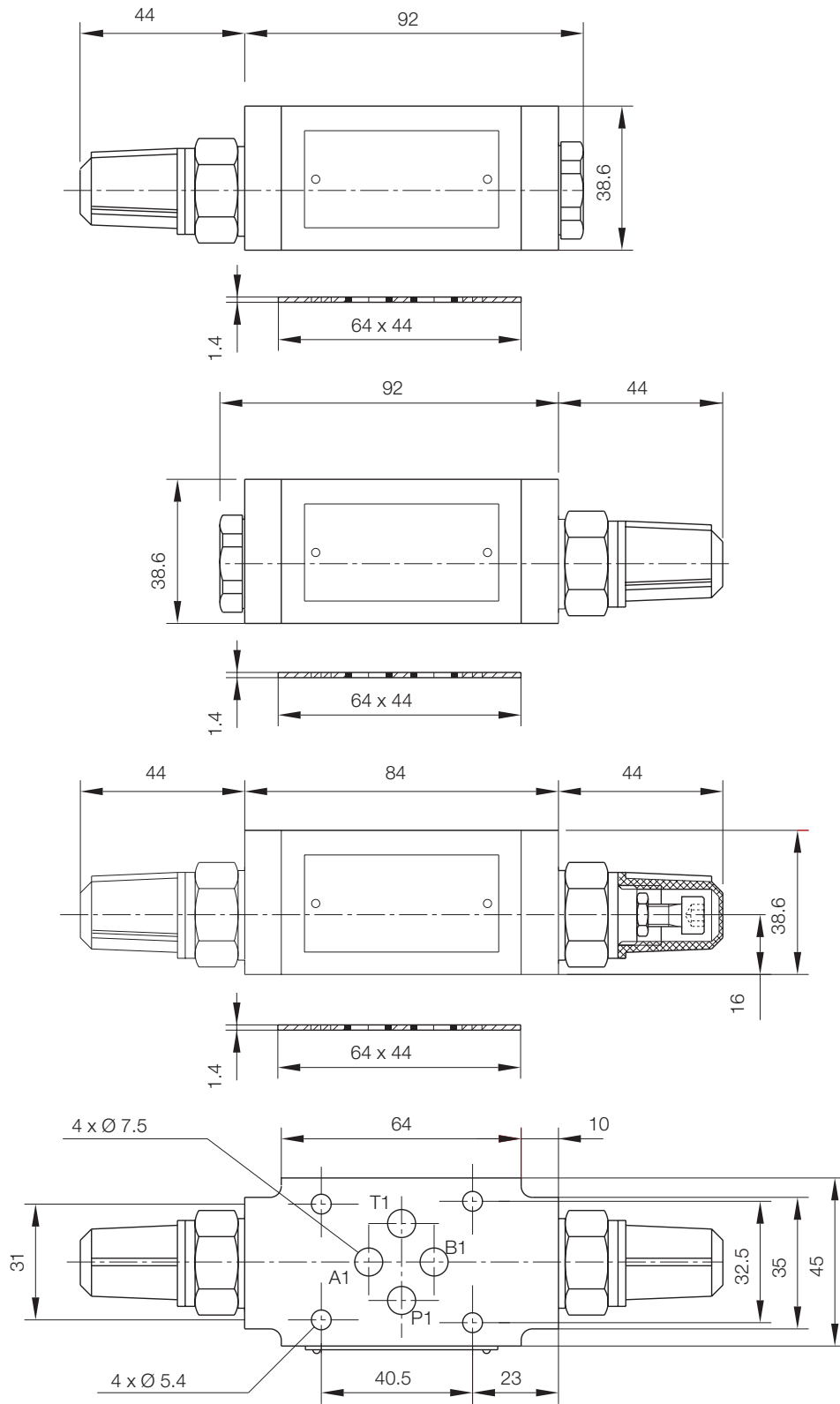
Symbol



Attention! The separate O-ring plate with fitted O-rings provides sealing of the valve connecting surface. According to the valve arrangement, the primary flow or secondary flow is provided. Changing the primary flow mode into the secondary flow mode can be done by

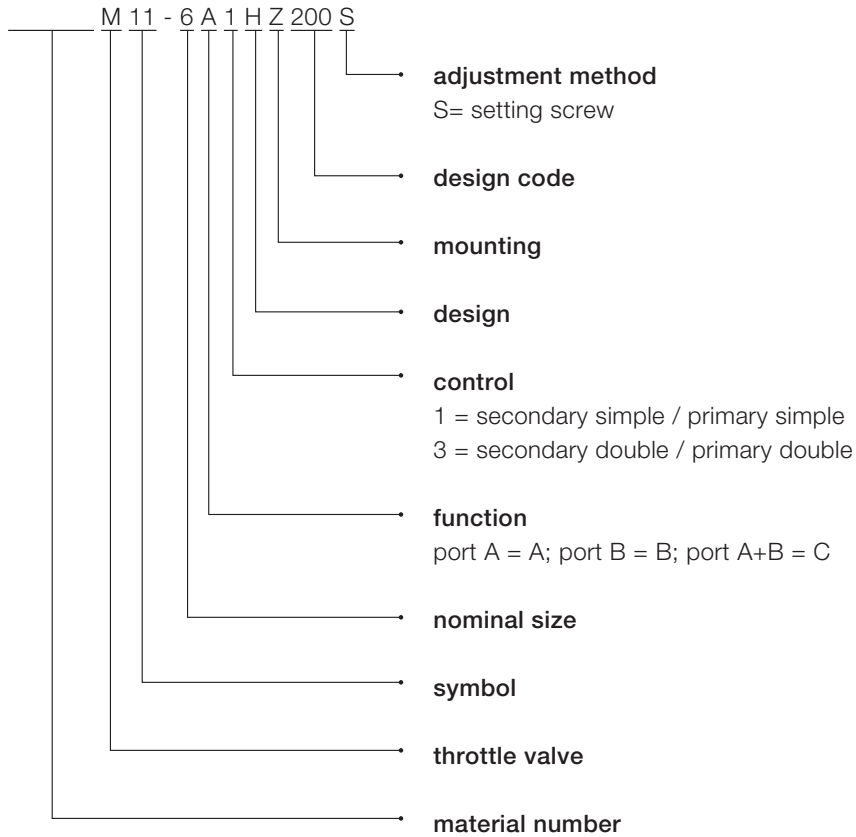
turning the valve by 180° around its horizontal axis. The orientation of the throttle check valves in the valve body corresponds with the symbols shown on the name plate.

Dimensional Drawing



dimensions in mm

Type Code



This is a translated document. Original language: german.
Legally binding language version of document: german.

Voith Turbo H + L Hydraulic GmbH & Co. KG
Schuckertstraße 15
71277 Rutesheim, Germany
Tel. +49 7152 992 3
Fax +49 7152 992 400
sales-rut@voith.com
www.voith.com/hydraulic-systems



VOITH
Engineered Reliability