

Hydraulic roll lift for material feeding systems

Product data sheet



Advantages

- + Adjustable lifting stroke without mechanical lift stop
- + Adjustable feed roll press force
- + Very short, reproducing switch and cycle time
- + Service stroke at reduced speed
- + Closed function subassembly compact design
- + Simple valve control with fast switching valves

Design and mode of operation

The hydraulic roll lifting control unit is a compact and self-contained assembly for use in roller feeders. With the cycle lifting control unit, the feed material is released for a short time to allow the alignment of the material with search pins. Before the search pins are retracted, the roller pair must be closed with a precisely defined force, which is why the roller lifting cycle is also directly time-critically dependent on the press cycle. Thanks to short reaction and actuating times, the valve components used can ensure dynamic intermediate lifting. The compact system solution provides optimum control in the effective interaction of the various machine elements and functions. Thanks to practical setting parameters, the Voith roll lift control unit can be adapted to different, plant-specific requirement profiles.

Technical data

Operating pressure*	250 bar
Arrangement lift cylinder*	Optional cylinder move forward → close/lift
Amount lift cylinder*	Any
Voltage	24 V
Valve switching time	17 ms (option 8 ms -HS2)
Volume accumulator*	0.5 l standard

* according to applications requirement design protocol

Options

- Electronic control for fast switching <10 ms
- Additional modules
 - Coil clamping
 - Electrically adjustable pressing pressure
- Application optimized special designs
- Roll lift for feed-straightening machines

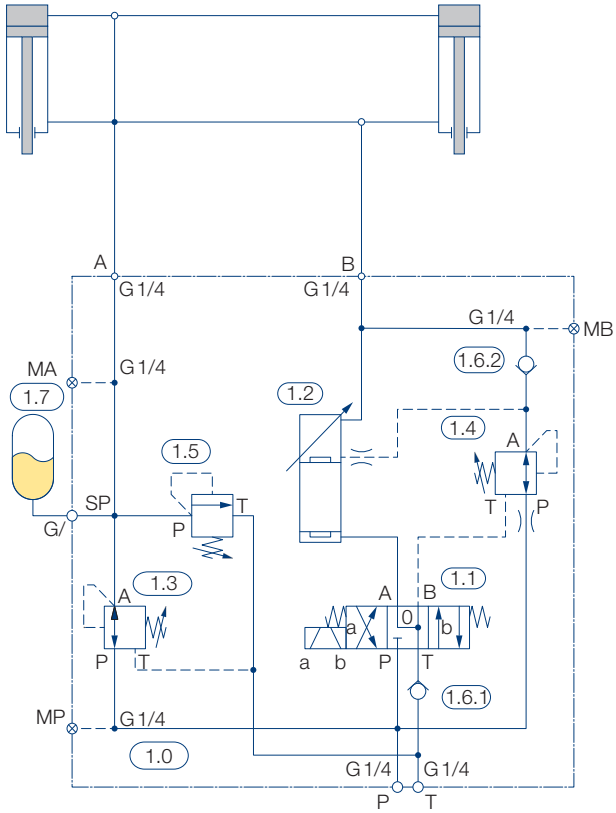
Application

- Feeding systems

Hydraulic roll lift

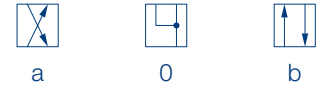


System drawing



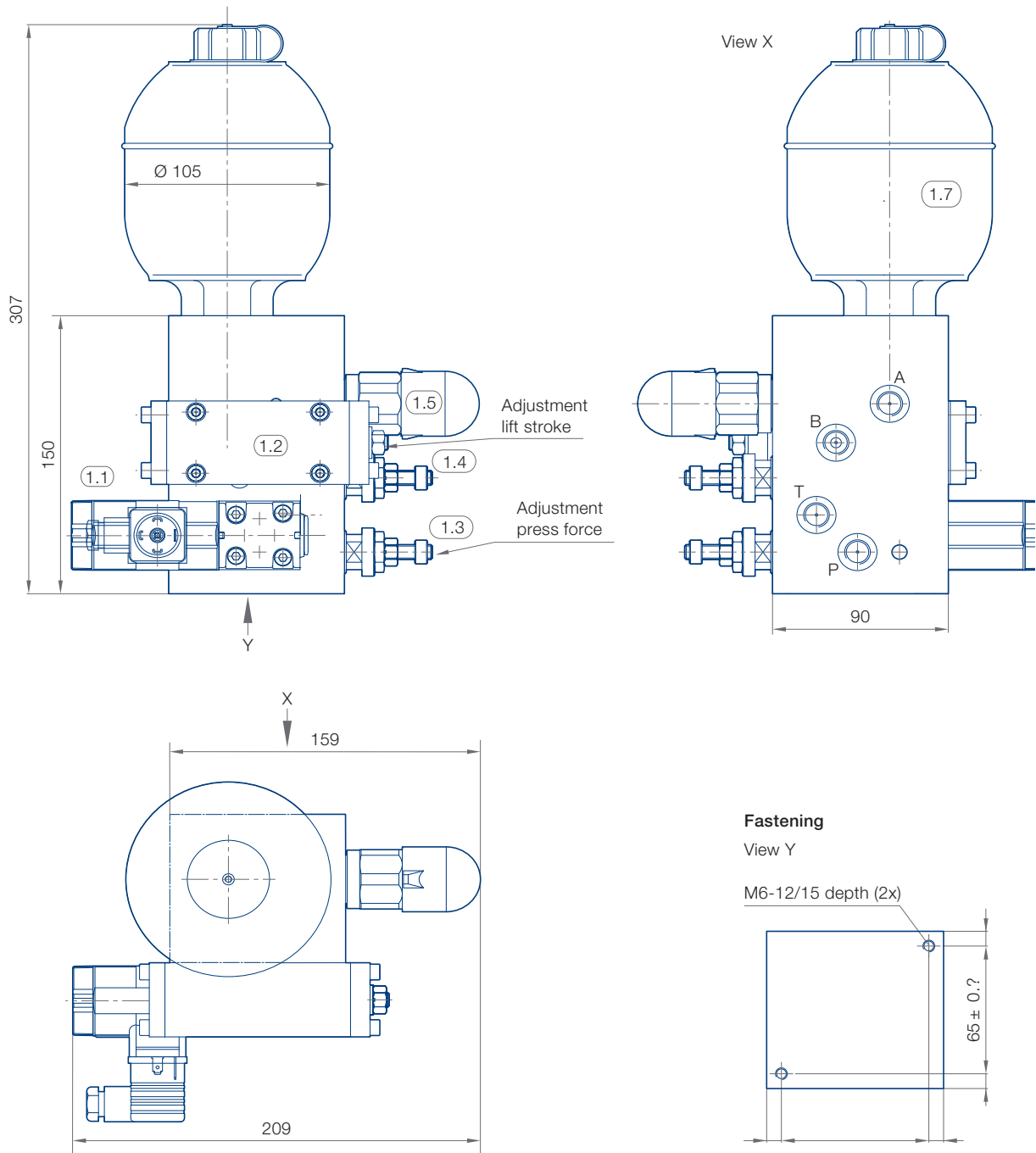
- | | |
|-------------------------------------|--------------------------------------|
| 1.0 Manifold | 1.4 Filling in valve (5-15 bar) |
| 1.1 Lift valve, rapid switching | 1.5 Pressure protection, accumulator |
| 1.2 Proportioning valve, adjustable | 1.6 Check valves |
| 1.3 Pressure reducing valve | 1.7 Accumulator |

Valve switching (1.1)



Takt lift			X
Takt close		X	
Service lift	X		
Service close		X	

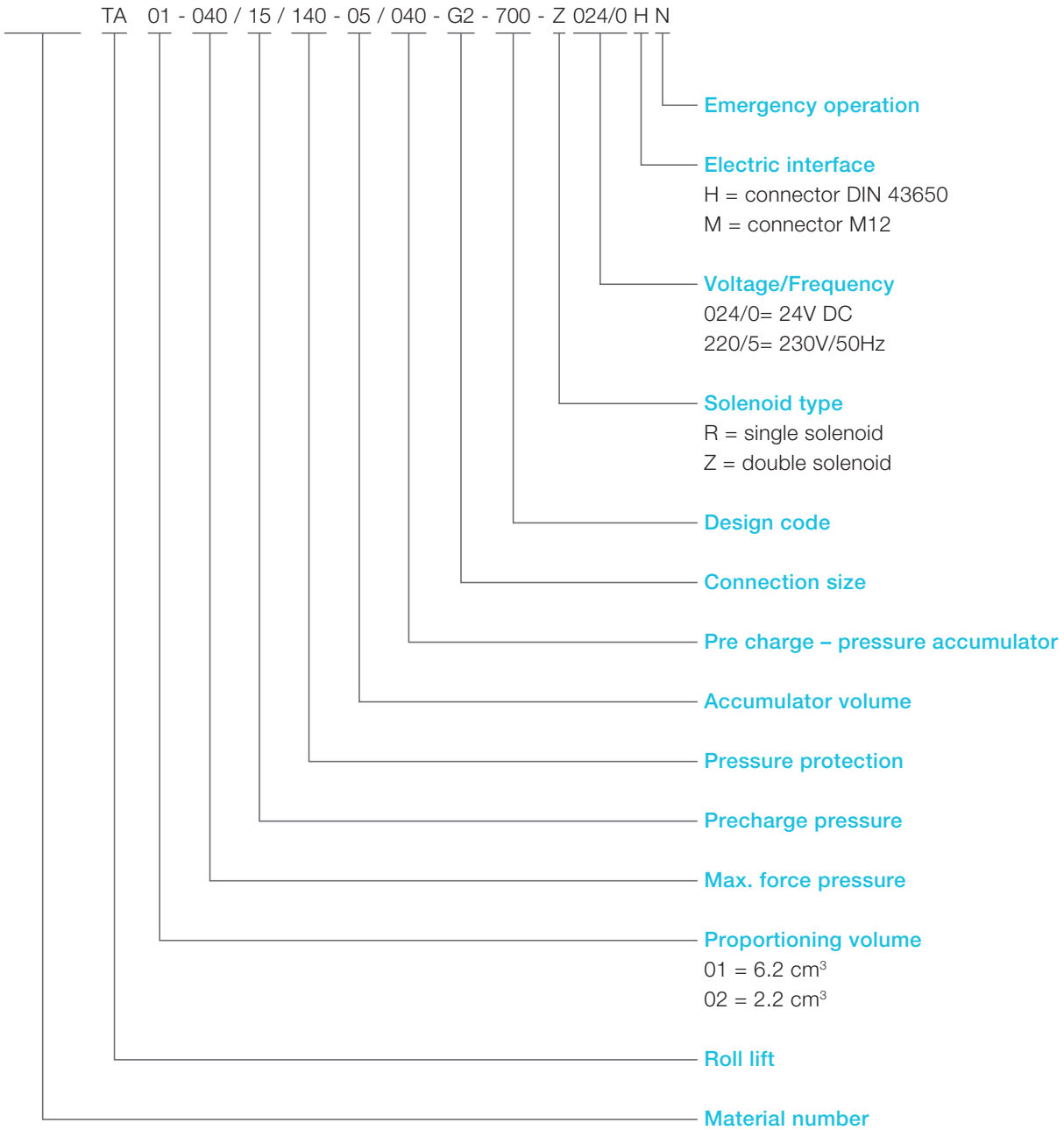
Dimensional drawing



Connections

P, A, B, T G 1/4"

Type code



This is a translated document
Original language: German
Legally binding language version of the document: German

Voith Group
St. Poeltener Str. 43
89522 Heidenheim
Germany

www.voith.com/hydraulics

Contact:
Phone +49 7152 992 3
sales-rut@voith.com



VOITH