

Pressure- Reduction Valve NG 6 ISO 4401, piloted, sandwich platte Technical Data Sheet



Technical Data

General

Type of valve	piston valve
Mounting method	sandwich plate
Connection	mounting plate
Mounting position	mountable in any position
Ambient temperature	-5 to +50 °C
Weight valve	1.2 kg

Hydraulic

Operation pressure P,A,B	max. 315 bar
Operation pressure T	max. 160 bar
Pressure step	63 bar; 100 bar; 160 bar; 210 bar
Hydraulic oil temperature	-5 to +70 °C
Viscosity range	20 to 400 mm ² /s
Volume flow	max. 40 l/min
Nominal flow	characteristic curve

Features

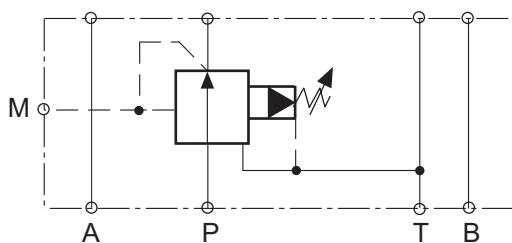
- damped piston valve, piloted
- small hysteresis
- several pressure step

Options

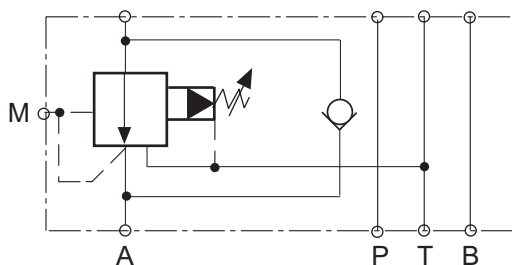
- several adjustment methods

Symbol

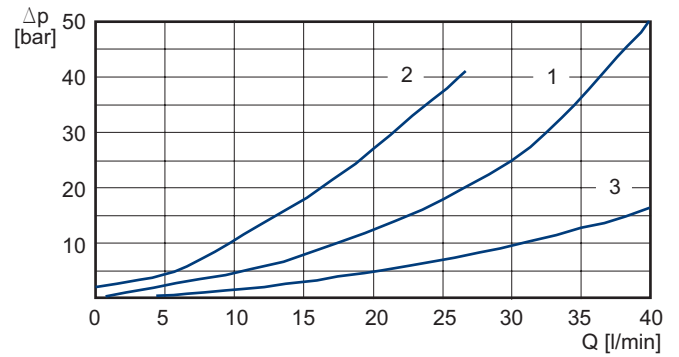
DY40 pressure reduction in P



DY41 pressure reduction in A



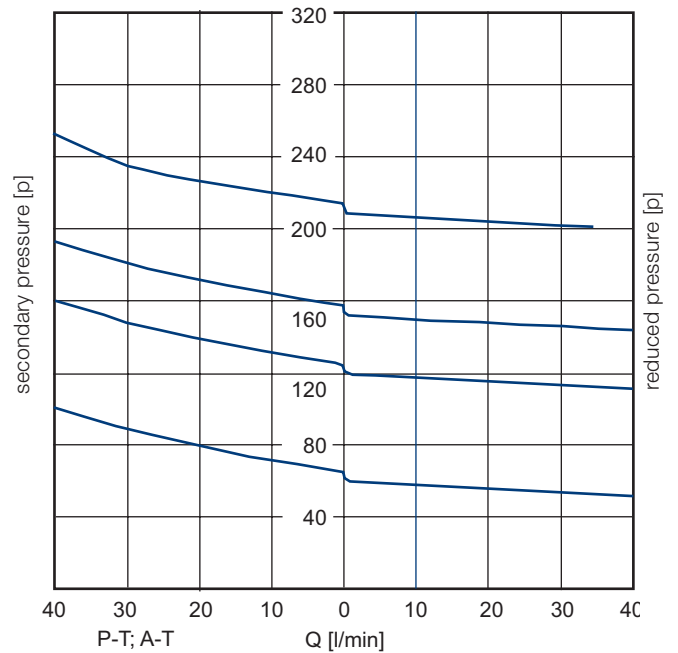
Characteristic Curve



1: DY40

2: DY41 - min. adjusted pressure (pressure gradient check valve)

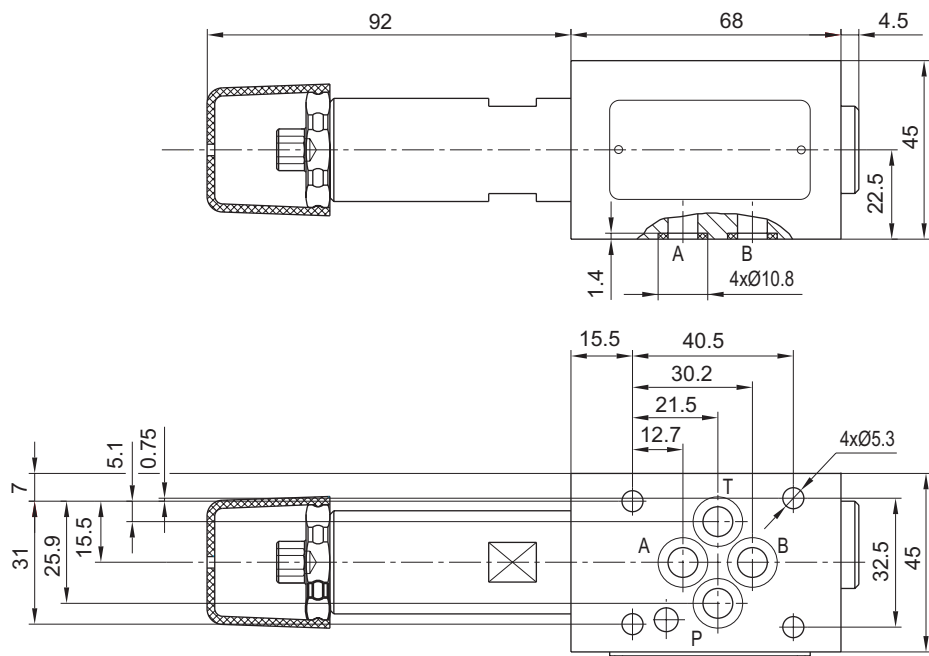
3: DY41 - check valve and pressure-reduction valve open



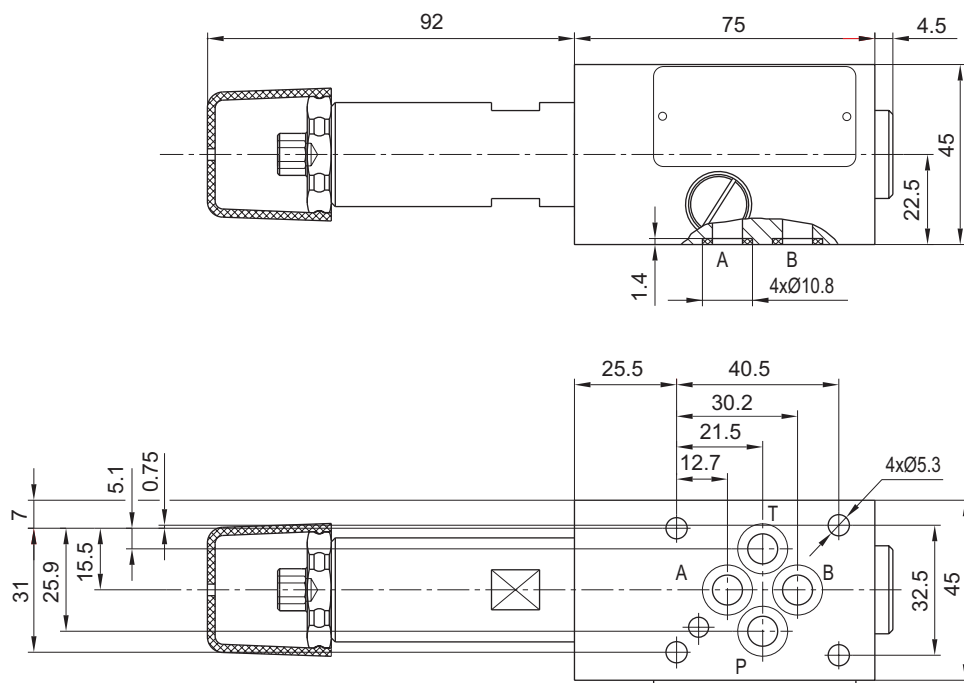
viscosity hydraulic oil 32 mm²/s

Dimensional Drawing

DY40 pressure reduction in P

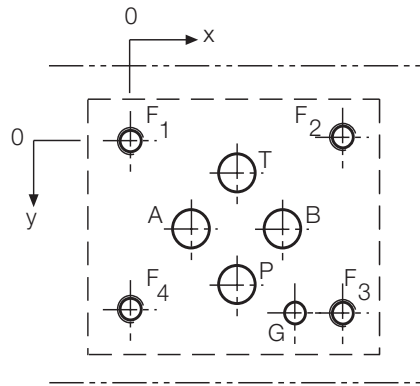


DY41 pressure reduction in A



dimensions in mm

Port Connection Pattern NG 6 ISO 4401



view: fastening side of mounting plate

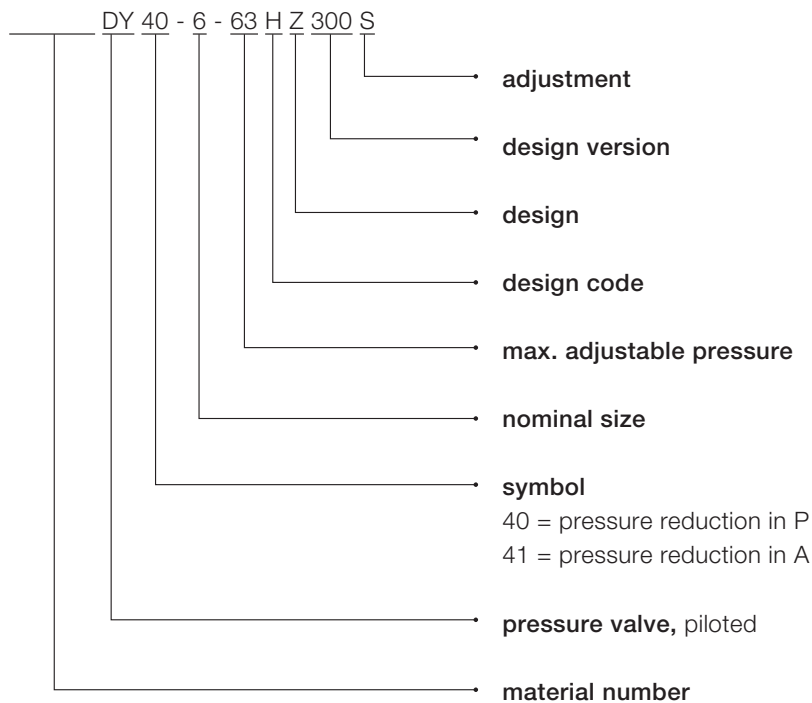
	P	A	T	B	F1	F2	F3	F4	G
Ø max [mm]	7.5	7.5	7.5	7.5	-	-	-	-	4
x [mm]	21.5	12.7	21.5	30.2	0	40.5	40.5	0	33
y [mm]	25.9	15.5	5.1	15.5	0	-0.75	31.75	31	31.75

F: M5, thread depth minimum $1.5 \times \text{Ø}$

G: bore hole depth minimum $1.5 \times \text{Ø}$

Various single and multiple mounting plates are available.

Type Code



This is a translated document. Original language: german.
Legally binding language version of document: german.

Voith Turbo H + L Hydraulic GmbH & Co. KG
Schuckertstraße 15
71277 Rutesheim, Germany
Tel. +49 7152 992 3
Fax +49 7152 992 400
sales-rut@voith.com
www.voith.de/hydraulic-systems



VOITH
Engineered Reliability