



Engineered to perform Voith TurboBelt Hese pulleys

Voith TurboBelt Hese pulleys have excellent running characteristics under extreme conditions such as heavy loading, heat, cold and humidity. They are an indispensable element in belt conveyors for material handling and are built to last.

We offer efficient and technically optimized pulleys to meet your requirements. Designs and calculations are carried out individually and depend on the ambient conditions of the particular areas of application.

Your benefits

- + Pulleys engineered for optimum operation of the conveyor
 - + Excellent running characteristics for high system availability
 - + Highest quality materials and components ensure long service life, up to 10 years
 - + Highest quality manufacturing
 - + Easy maintenance
 - + Explosion protection according to ATEX
-

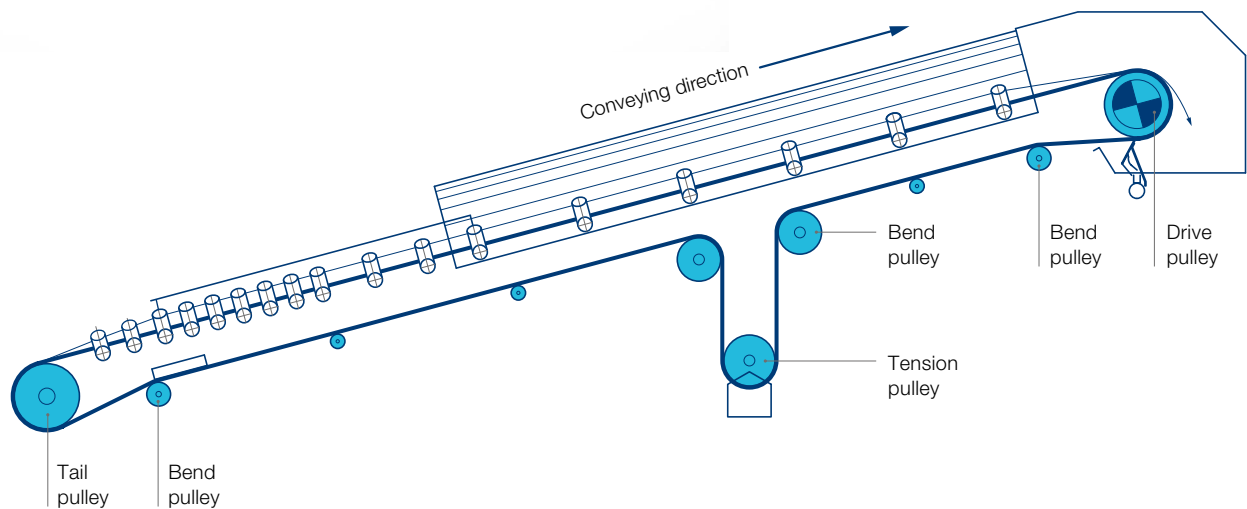
TurboBelt Hese pulleys



Calculation and engineering

We have developed our own software for the calculation and engineering of our belt conveyor pulleys. It is based on our long-term experience and various tension and deformation analysis carried out via FEM. Our software ensures reliable dimensioning and design of conveyor pulleys. Our analysis provides an optimized pulley configuration for your requirements.

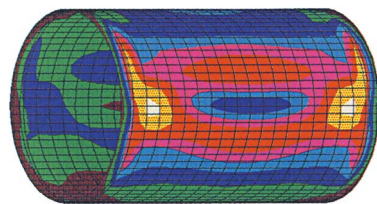
Pulley product range – Voith offers all types of pulleys for use in belt conveyor applications



Technical data

Pulley diameters	up to 3000 mm
Pulley width	up to 6000 mm
For loads	> 4000 kN
Design	standard internal bottom as well as special high tension T-bottom design
Lagging	all rubber or rubber-ceramics

FEM calculation of a pulley



Voith Group
St. Poeltener Str. 43
89522 Heidenheim
Germany

Contact:
Phone +49 201 55783-61
material-handling@voith.com



www.voith.com/material-handling

VOITH