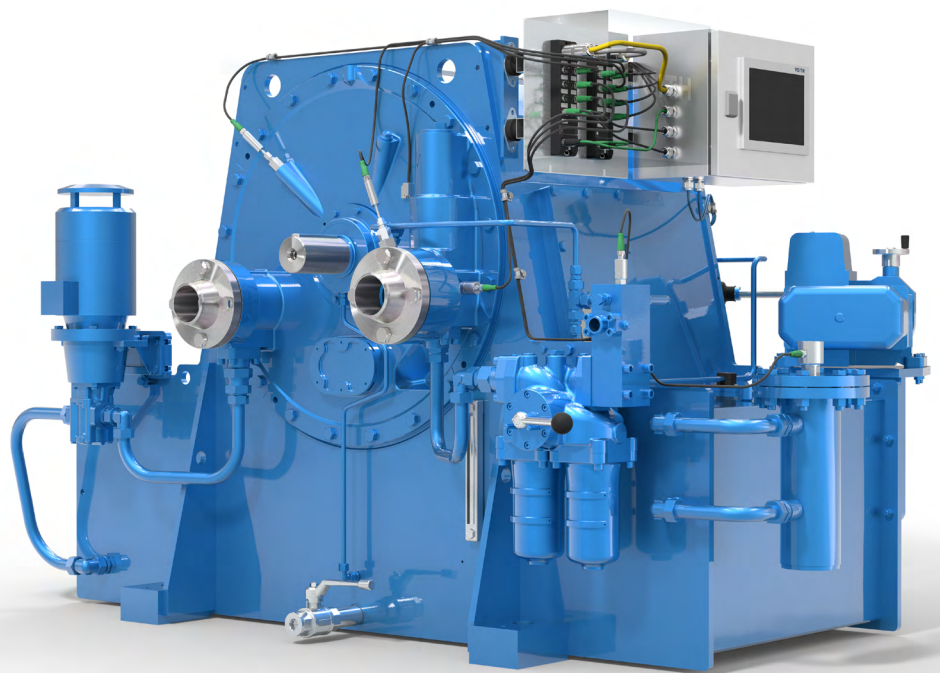


New digital measurement system for variable speed couplings OnCare.Health IOLIS



Benefits

- + Smart and simple sensor system
- + Minimal wiring
- + Easy maintenance and handling
- + Quick and precise data transfer
- + Fast replacement

Enabling easy monitoring of operating data, OnCare.Health IOLIS, is a compact measurement system for variable speed couplings that transmits process data from the coupling digitally to the control room via bus protocols (ProfiNet, ModBus TCP, and Ethernet IP). Additionally, this system is easily integrated into existing and new couplings.

Temperature, pressure or scoop tube position, trends and irregularities are all clearly displayed via the home screen. Anomalies can be identified at an early stage, this facilitates corrective action before the onset of a potential failure.

All components and sensors are easy to install and worldwide available due to the standardized IO-Link system design. This digital monitoring system consists of IO-Link measurement components and a visualization unit.

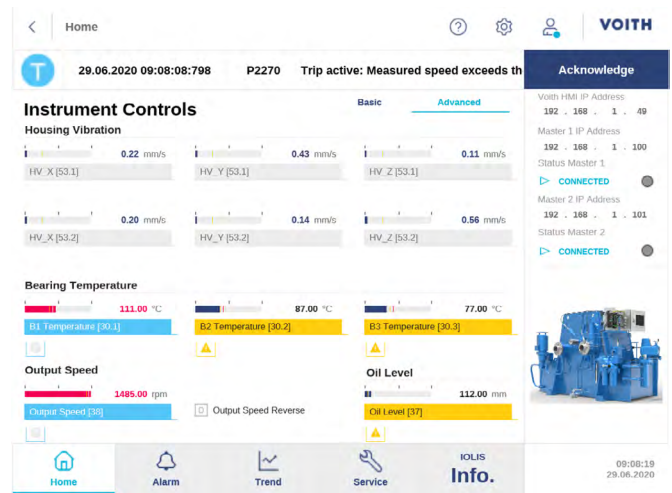
Platform for IoT future

Preparing your operation for the IoT future, OnCare.Health IOLIS, has the potential to be integrated into network systems via an Ethernet connection.

This enables:

- Condition monitoring
- Trend indications
- Secure remote access
- Predictive maintenance
- Remote maintenance

Real time process data: OnCare.Health IOLIS home screen



Core functions:

- Real time monitoring and overview of process data
- Chronological visualization
- Option of remote screen via web-browser
- Warning and trip display/memory
- Diagnostic interface

Voith Group
St. Poeltener Str. 43
89522 Heidenheim
Germany

voith.com/vs-coupling

Contact:
Phone +49 7951 32 261
IOLIS@voith.com



VOITH
Inspiring Technology
for Generations