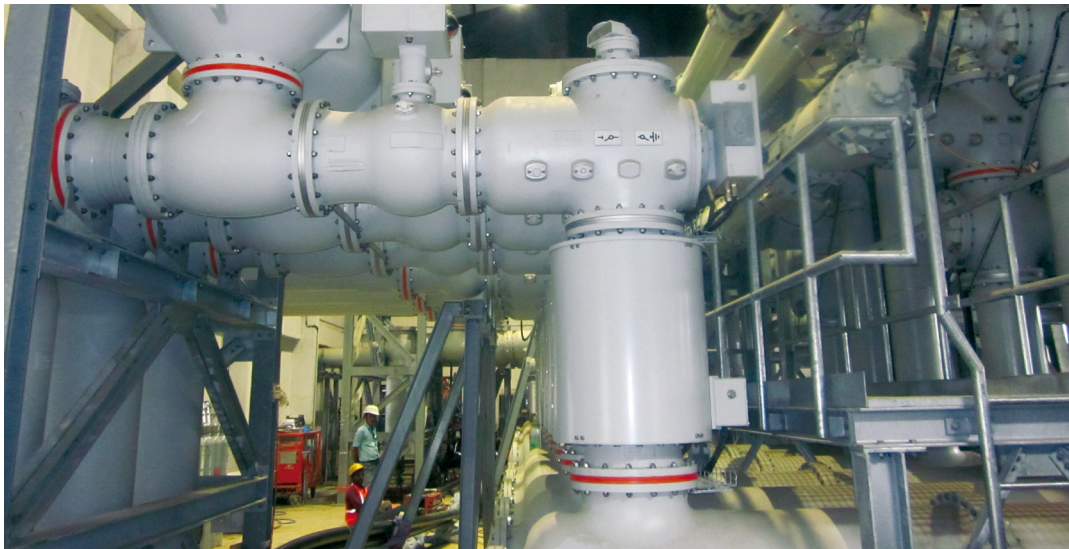


Project Fact Sheet. Sorang – 100 MW Hydro Electric Power Plant



The Sorang Hydroelectric Project with its planned installed capacity of 100 MW is being executed as a run of the river scheme on Sorang Khad, a tributary of Sutlej river in Kinnaur district of Himachal Pradesh, India by Himachal Sorang Power Limited (HSPL). The project is expected to be commissioned in 2014.

Voith Hydro is responsible for execution of complete scope of Electro-mechanical works on turnkey basis which broadly consists of Engineering, Procurement, Installation, testing and commissioning of 2 generating units each of 50 MW with its ancillaries and balance of plant equipment.

Key Features

Turbine	
Turbine type	Vertical Pelton
Number of units	2
Nominal rated output per unit	50.875 MW
Rated speed	600 rpm
Rated net head	666 m
Runner diameter	1750 mm
Rated discharge	10.298 m ³ /s
Generator	
Rated output	55.56 MVA
Rated power factor	0.9
Rated voltage	11 kV
Major auxiliaries including	
Switchyard voltage	400 KV (GIS)
No. of bays	05
Main Inlet Valves	02
Station & Auxiliary Transformers, Cable & Cable carrier system, MV & LV Switchgear, EOT Crane	

Location



Voith Hydro Pvt. Ltd.
A-20 & 21, Sector-59,
Noida – 201 301 (UP/India)
Tel. +91 12 03 07-42 42
Fax +91 12 03 07-42 43
hydro.india@voith.com
vhnsales@voith.com
www.voith.com

VOITH