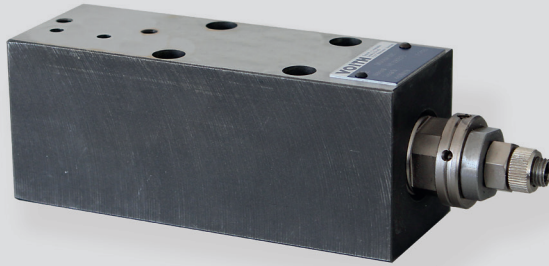


Pressure-Reducing Valve, directly controlled, NG 6 ISO 4401 Technical Data Sheet



Technical Data

General

Type	piston valve
Mounting	4x M5x50 DIN912
Connection of ports	mounting plate
Ambient temperature	-5 to +50 °C
Mounting position	mountable in any position
Mass valve	1,2 kg

Hydraulic

Pressure steps at port A and B	3 - 30 bar; 5 - 60 bar; 10 - 150 bar or 20 - 250 bar
Hydraulic oil temperature	-10 to +70 °C
Viscosity range	10 to 300 mm ² /s
Nominal flow	characteristic curve

Features

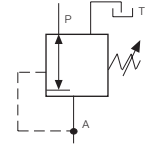
- damped piston valve
- small hysteresis
- several pressure steps
- different adjustment method

Option

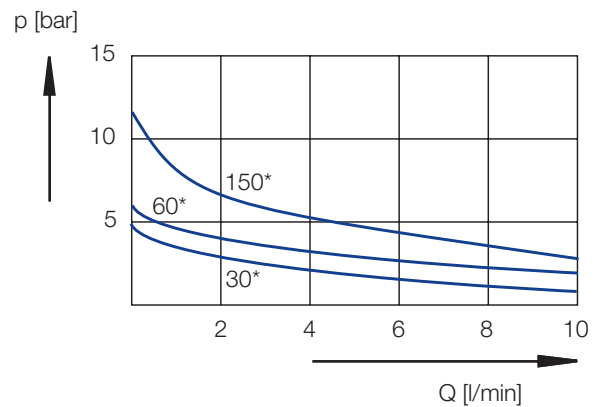
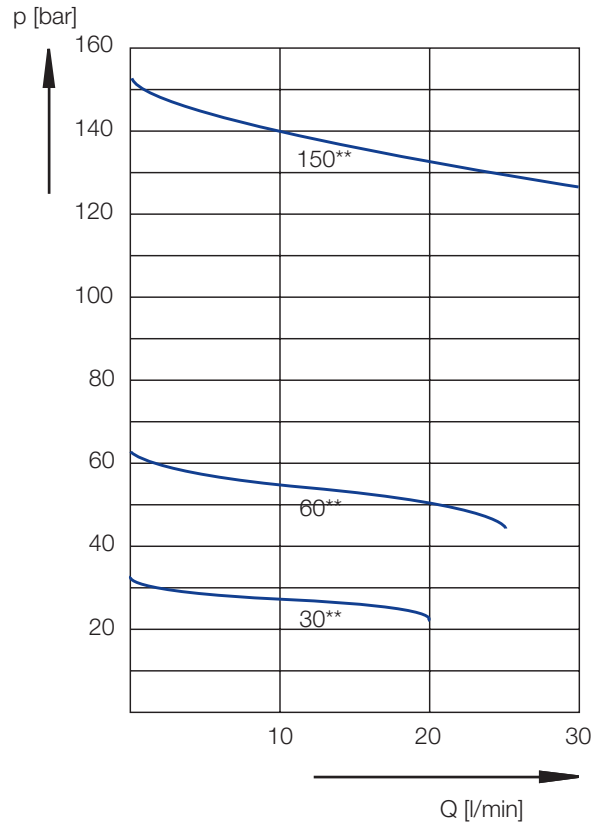
- pressure gauge shut-off valve

Symbol

D40

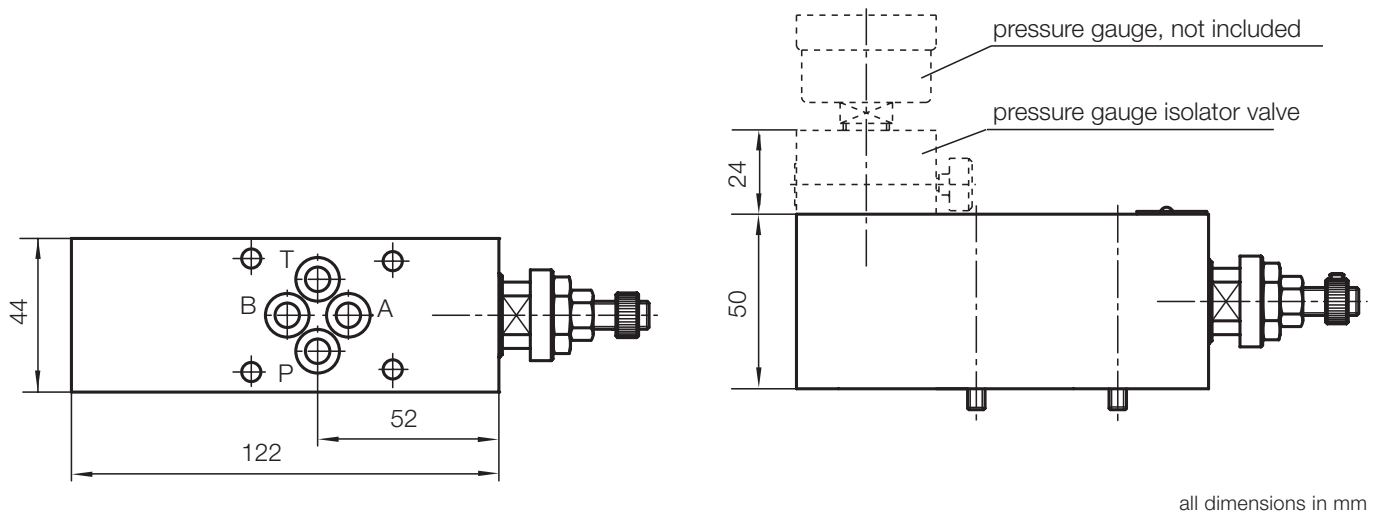


Characteristic Curve

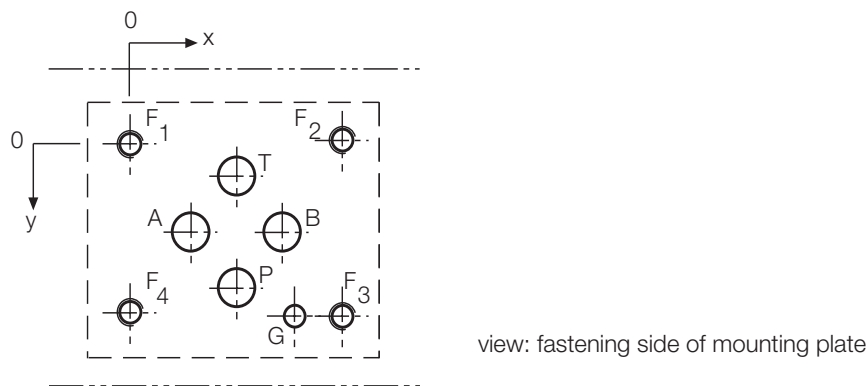


*min. adjustable pressure
 **max. adjustable pressure
 hydraulic oil 35 mm²/s, 50°C

Dimensional Drawing



Port Connection Pattern NG 6 ISO 4401



view: fastening side of mounting plate

	P	A	T	B	F1	F2	F3	F4	G
Ø max [mm]	7,5	7,5	7,5	7,5	-	-	-	-	4
x [mm]	21,5	12,7	21,5	30,2	0	40,5	40,5	0	33
y [mm]	25,9	15,5	5,1	15,5	0	-0,75	31,75	31	31,75

F: M5, thread depth minimum 1.5 x Ø

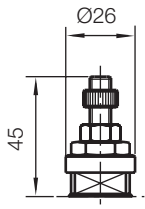
G: bore hole depth minimum 1.5 x Ø

Various single and multiple mounting plates are available.

Adjustment Method

design S

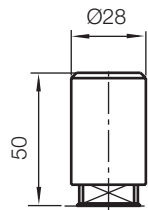
S = setting screw



design K; P

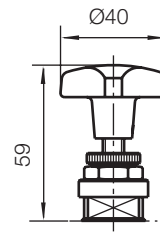
K = cover

P = cover with lead seal



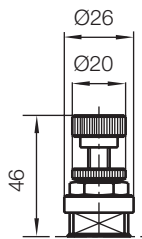
design G

G = star knob



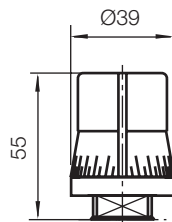
design H

H = handwheel



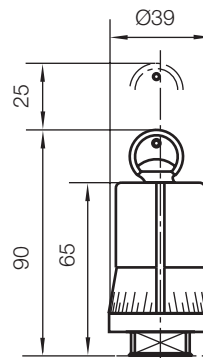
design D

D = rotary knob



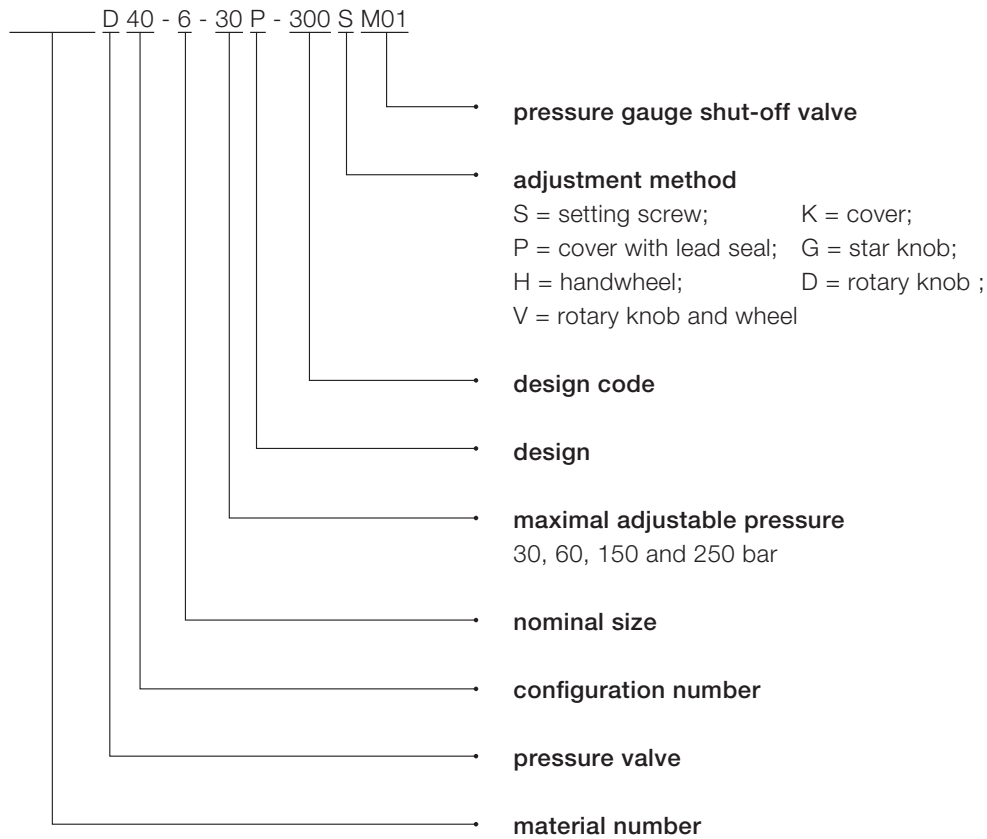
design V

V = rotary knob and lock



all dimensions in mm

Type Code



This is a translated document. Original language: german.
Legally binding language version of document: german.

Voith Turbo H + L Hydraulic GmbH & Co. KG
Schuckertstraße 15
71277 Rutesheim, Germany
Tel. +49 7152 992 3
Fax +49 7152 992 400
sales-rut@voith.com
www.voith.de/hydraulic-systems



VOITH
Engineered Reliability