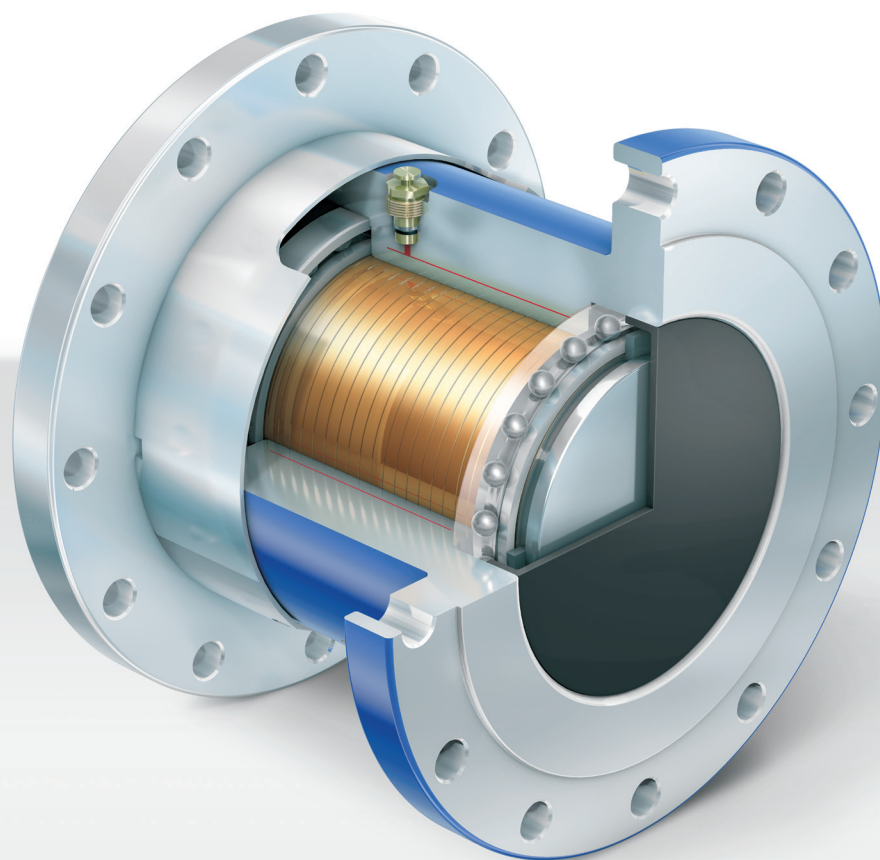


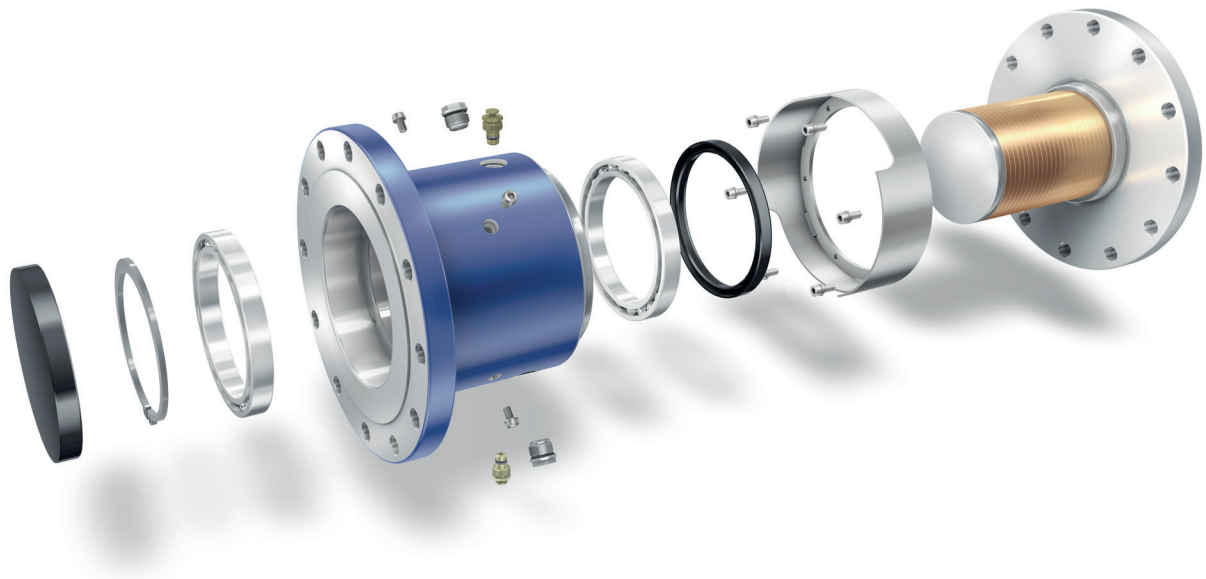
# The next generation torque limiter SafeSet EZi



# Explore the next generation SafeSet

---

Enabling maximum performance and ensuring safety in tough environments



Robust, reliable and proven technology perfected over 40 years



Improved lead and delivery times



Simplified resetting is facilitated by technical enhancements and a shear tube installation tool



Release mechanism design enables peak shaving, without disengaging the coupling



Add Dtect and monitor the status of your coupling

---

# Make the EZi choice

Protecting your drive train has been our core business for over 40 years. With this in mind, we are simplifying and adding value, making the choice easy for you. Listening to you, our customer, there is a growing need for faster delivery times, easier handling during operation and simple maintenance. This is now a reality with our newest generation of SafeSet EZi couplings.

## Designed for increased productivity

Building on trusted technology with proven accuracy, our technical enhancements now include a peak shaving function. This improved release mechanism facilitates protection during short transient loads without releasing, whilst the wider slots together with the dual connection allows for quick and easy resetting. In order to improve efficiency and reduce maintenance time, a shear tube installation tool is included in your service box, simplifying the exchange of the tube, following an overload event.

## Coupling design within minutes

Time is money – customized drawings are provided within minutes of finalizing your coupling with our virtual design tool. This design concept together with an optimized manufacturing process, significantly improves the lead time and delivery time.

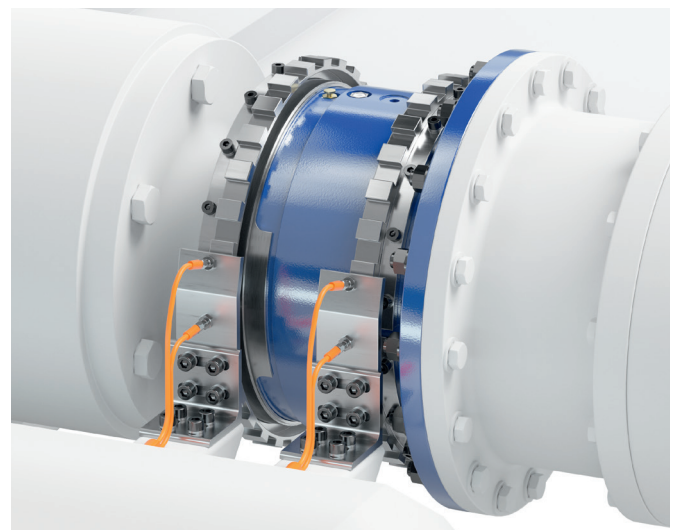
## Easy maintenance

Oil change procedures are simplified with multiple oil filling ports, this provides access without the need to rotate the coupling. This design upgrade offers a back-up solution. Should one port get damaged, there is a secondary port which enables continuous production. Furthermore, a user-friendly filling tool, together with predefined oil volumes saves time. The design concept improves spare part availability and delivery time, and thereby eases maintenance procurement and planning stress.

## Adding digital intelligence

Additionally, monitoring the status of your coupling is simple with Voith Dtect. This fully compatible optional system provides:

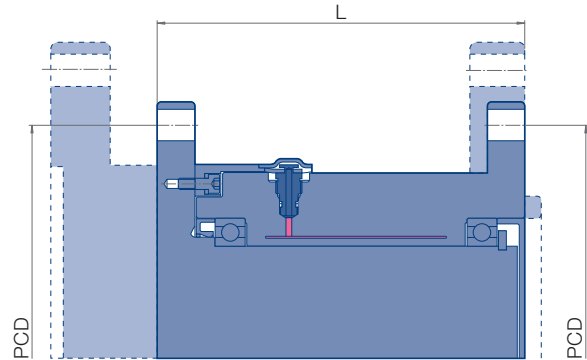
- Peak load slippage measurement
- Speed
- Disconnection indication and event logging
- Service indicators



SafeSet torque limiting coupling EZi-N with Dtect system

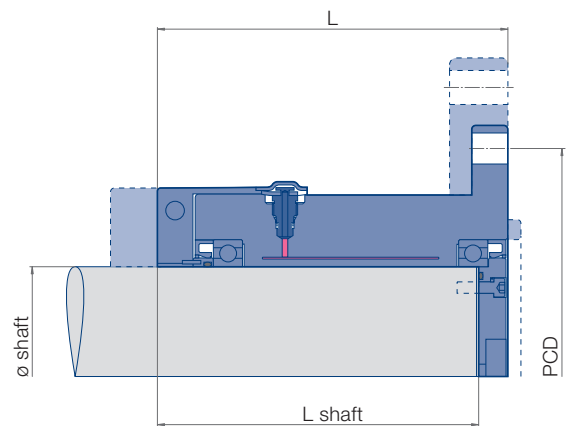
### SafeSet EZi-P series, for flange to flange connections

Size	$M_A$ [kNm]	$PCD_{min}^1$ [mm]	$L_{min}^2$ [mm]
60	1.3–3.3	172	133
120	4.6–20	250	190
180	13.1–59.8	340	262
260	39.2–179	489	361
340	110–461	628	527
420	171–788	761	585



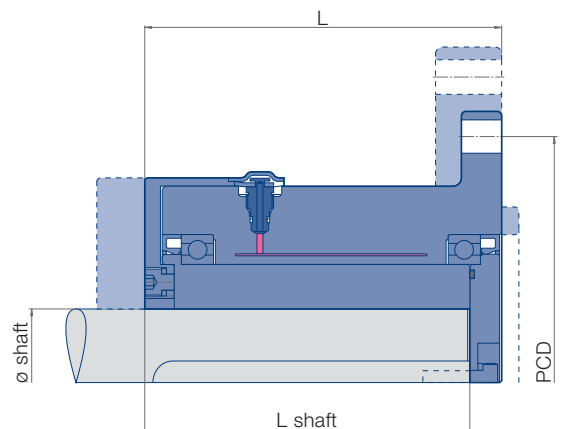
### SafeSet EZi-N series, for cylindrical shaft to flange connections

Size	$M_A$ [kNm]	$PCD_{min}^1$ [mm]	$L_{min}^2$ [mm]	Shaft $\varnothing$ [mm]
60	1.3–3.3	172	143	60
90	3.2–12	204	198	90
120	4.6–20	250	193	120
150	8.9–38.9	294	235	150
200	17.9–81.8	373	288	200



### SafeSet EZi-K series, for keyway shaft to flange connections

Size	$M_A$ [kNm]	$PCD_{min}^1$ [mm]	$L_{min}^2$ [mm]	Shaft $\varnothing_{max}^3$ [mm]
120	4.6–20	250	181	85
180	13.1–59.8	340	251	135.5
260	39.2–179	489	342	209.5
340	110–461	628	497	283
420	171–788	761	557	348



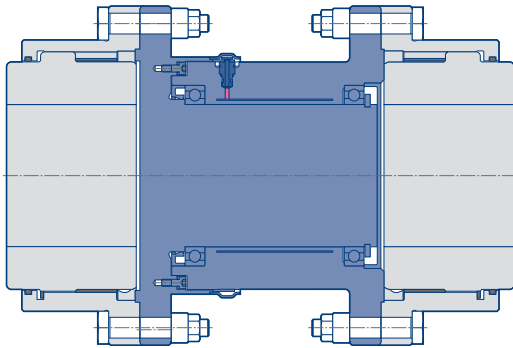
The tables above illustrate the most common coupling configurations. Please use our web based tool for additional configurations.

Please note: All interface measurements can be configured and tailored to your unique application.

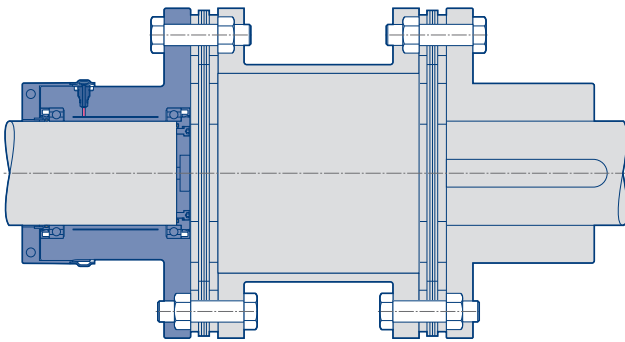
$M_A$ : Release torque – adjustment range

- 1: Minimum PCD (pitch circle diameter) depends of selected hole size
- 2: Minimum L depends of selected flange thickness and type of centering
- 3: Minimum shaft diameter depends on number of keys in keyway shaft

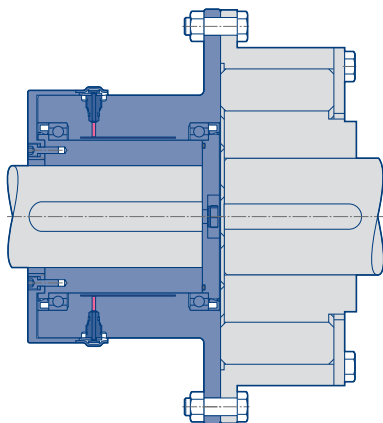
SafeSet EZi-P, used between two gear coupling halves



SafeSet EZi-N, with lamella coupling



SafeSet EZi-K, for keyway shaft with flexible coupling



Voith Group  
St. Poeltener Str. 43  
89522 Heidenheim, Germany

Contact:  
Phone +46 650 540150  
[sales.safeset@voith.com](mailto:sales.safeset@voith.com)  
[www.voith.com/safeset](http://www.voith.com/safeset)



**VOITH**