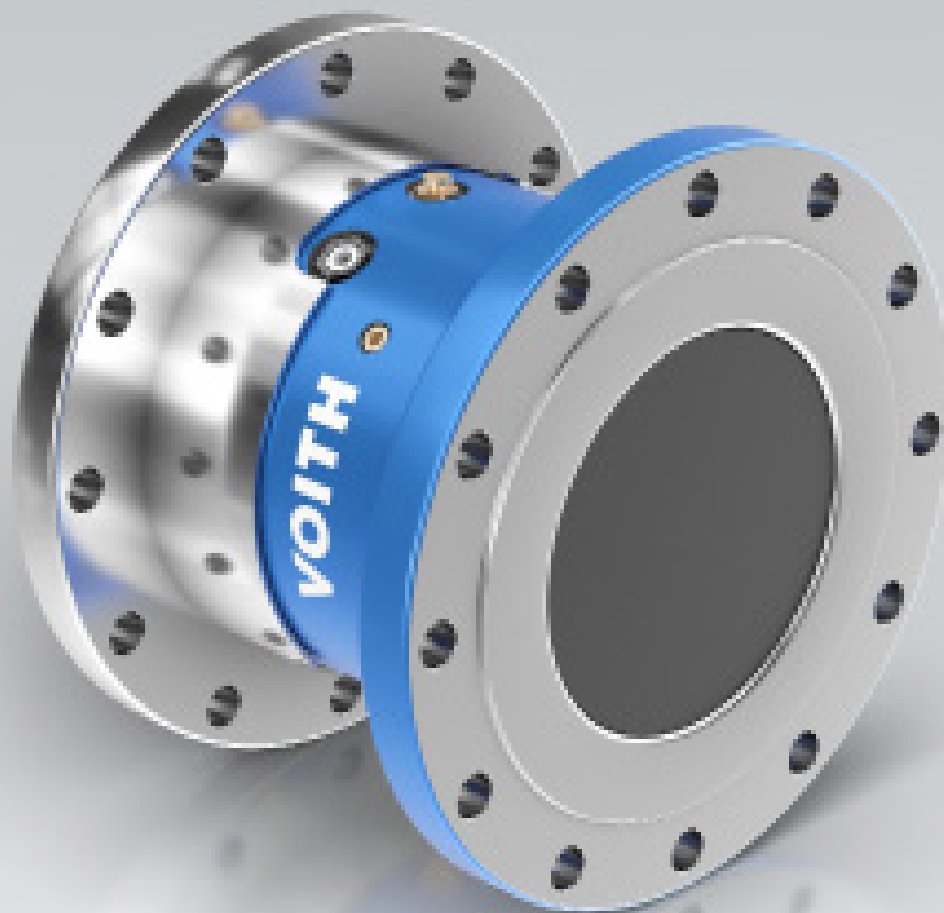


# The next generation torque limiter SafeSet EZi



# Make the EZi choice

Protecting your drive train has been our core business for over 40 years. With this in mind, we are simplifying and adding value, making the choice easy for you. Listening to you, our customer, there is a growing need for faster delivery times, easier handling during operation and simple maintenance. This is now a reality with our newest generation of SafeSet EZi couplings.

## Designed for increased productivity

Building on trusted technology with proven accuracy, our technical enhancements now include a peak shaving function. This improved release mechanism facilitates protection during short transient loads without releasing, whilst the wider slots together with the dual connection allows for quick and easy resetting. In order to improve efficiency and reduce maintenance time, a shear tube installation tool is included in your service box, simplifying the exchange of the tube, following an overload event.

## Coupling design within minutes

Time is money – customized drawings are provided within minutes of finalizing your coupling with our virtual design tool. This design concept together with an optimized manufacturing process, significantly improves the lead time and delivery time.

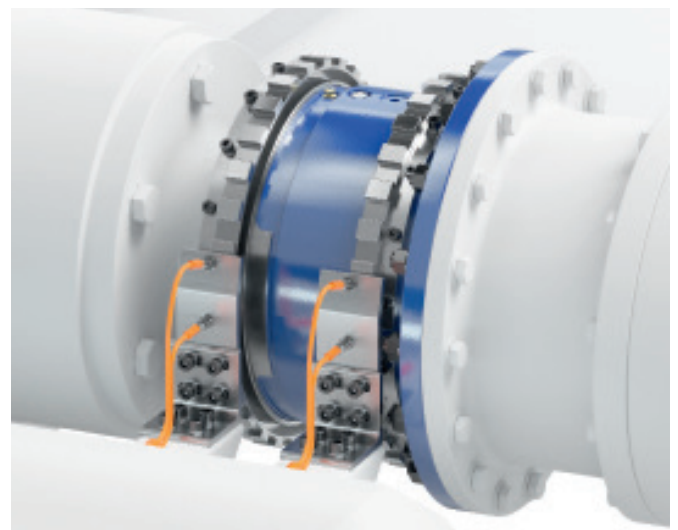
## Easy maintenance

Oil change procedures are simplified with multiple oil filling ports, this provides access without the need to rotate the coupling. This design upgrade offers a back-up solution. Should one port get damaged, there is a secondary port which enables continuous production. Furthermore, a user-friendly filling tool, together with predefined oil volumes saves time. The design concept improves spare part availability and delivery time, and thereby eases maintenance procurement and planning stress.

## Adding digital intelligence

Additionally, monitoring the status of your coupling is simple with Voith Dtect. This fully compatible optional system provides:

- Peak load slippage measurement
- Speed
- Disconnection indication and event logging
- Service indicators

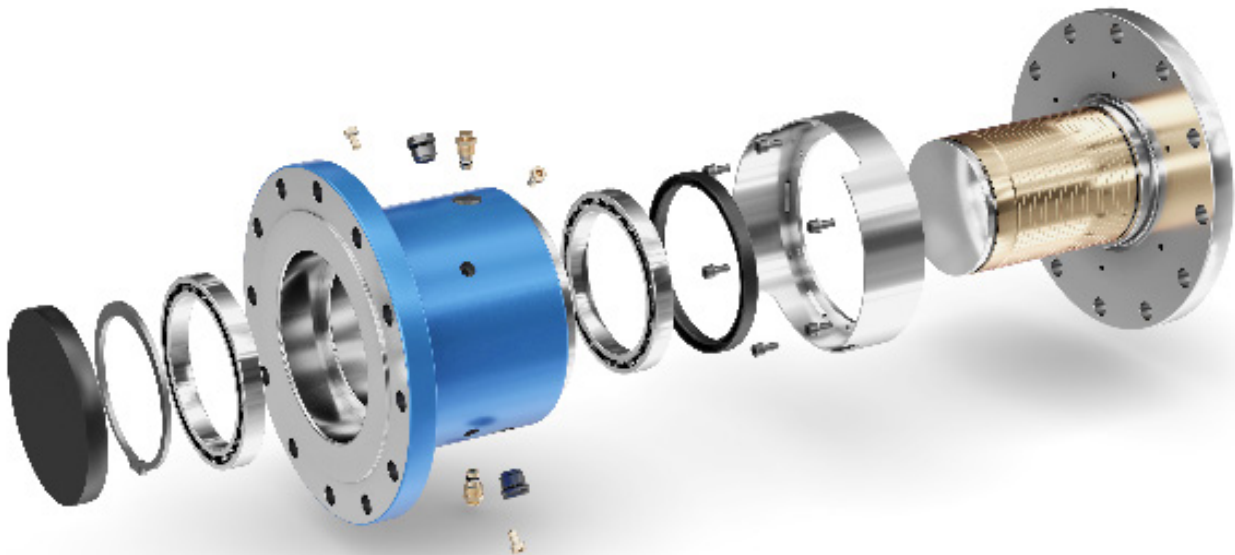


SafeSet torque limiting coupling EZi-N with Dtect system

# Explore the next generation SafeSet

---

Enabling maximum performance and ensuring safety in tough environments



Robust, reliable and proven technology perfected over 40 years



Improved lead and delivery times



Simplified resetting is facilitated by technical enhancements and a shear tube installation tool



Release mechanism design enables peak shaving, without disengaging the coupling



Add Dtect and monitor the status of your coupling

---

# Easy adaptable interfaces

## SafeSet EZI

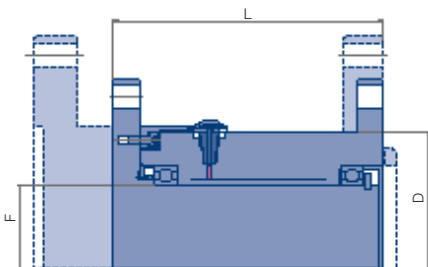
The SafeSet EZI is a highly configurable coupling type where only the core is fixed. With the virtual design tool, you can adapt the SafeSet EZI to fit your interface within minutes.

Below table is an overview of the EZI concept to give an indication of size and type for your specific coupling.

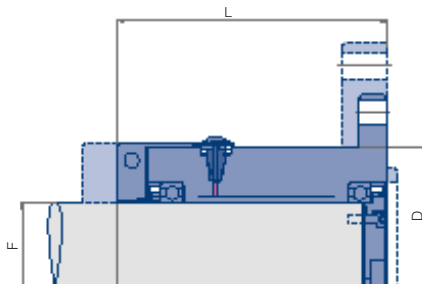
Size EZI					Minimum L by type*		
øF	Minimum torque [kNm]	Maximum torque [kNm]	Max speed [rpm]	Minimum øD*	EZI-P	EZI-N	EZI-K
60	0,7 - 3,3		7200	129	105	118	-
70	0,9 - 5,6		6400	139	115	126	-
80	1,3 - 8,4		5600	149	127	136	-
90	2,0 - 12		4700	159	147	158	-
100	2,7 - 16,3		4480	169	157	168	-
110	1,9 - 18		4000	179	137	148	136
120	2,7 - 23,5		3600	199	141	149	137
130	3,3 - 30		3440	209	154	164	152
140	4,0 - 37,6		3200	229	158	170	160
150	5,4 - 45,6		2880	239	170	180	170
160	7,0 - 47,2		2720	249	174	184	174
170	7,8 - 56,9		2560	265	195	202	192
180	9,9 - 67		2400	280	201	207	197
190	11,4 - 79,2		2240	296	211	217	207
200	13 - 92,8		2160	312	220	226	216
220	17,8 - 123		1920	342	232	-	226
240	23 - 161		1760	378	256	-	252
260	30 - 206		1600	408	271	-	262
280	36,1 - 254		1520	438	298	-	291
300	46,7 - 314		1360	466	321	-	313
320	55 - 383		1280	497	332	-	320
340	67,1 - 461		1200	528	354	-	341
360	79,4 - 550		1120	559	363	-	344
380	63,4 - 583		1040	590	352	-	343
400	71,5 - 680		1040	621	365	-	356
420	84,2 - 788		960	651	375	-	365

\*Minimum L and D for Max torque can be slightly bigger, please verify your choice in the Voith coupling configurator

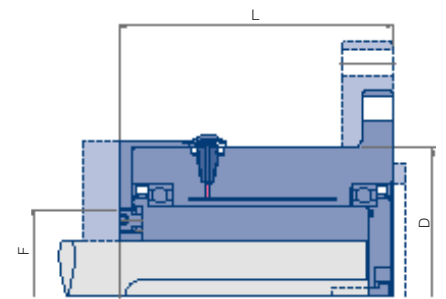
SafeSet EZI-P series, for flange to flange connections



SafeSet EZI-N series, for cylindrical shaft to flange connections

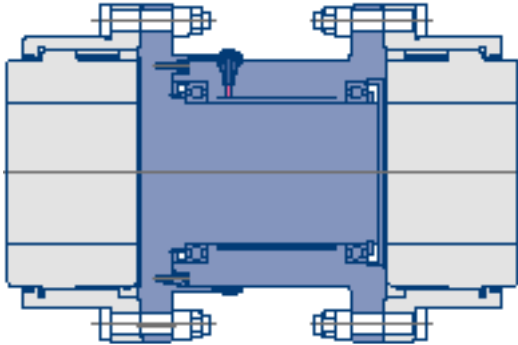


SafeSet EZI-K series, for keyway shaft to flange connections

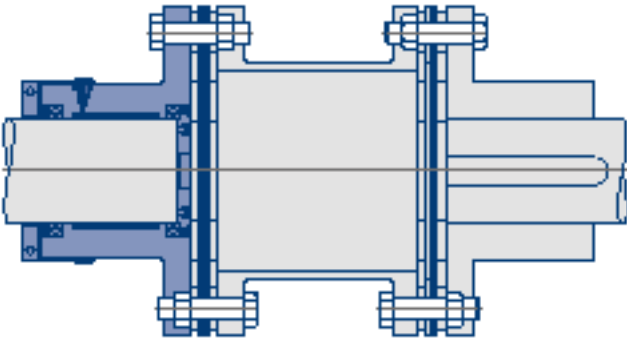


# Examples of configurations

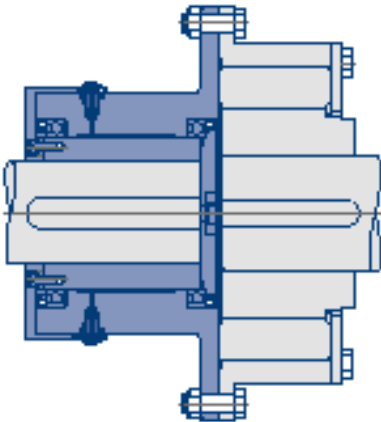
SafeSet EZi-P, used between two gear coupling halves



SafeSet EZi-N, with lamella coupling



SafeSet EZi-K, for keyway shaft with flexible coupling



Voith Group  
St. Poeltener Str. 43  
89522 Heidenheim, Germany

Contact:  
Phone +46 650 540150  
[sales.safeset@voith.com](mailto:sales.safeset@voith.com)  
[www.voith.com/safeset](http://www.voith.com/safeset)



**VOITH**