

Check Valve NG 4 ISO 4401, sandwich-plate valve Technical Data Sheet



Technical Data

General

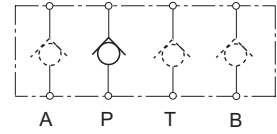
Type of valve	seat valve, spring-loaded
Mounting method	sandwich plate
Mounting positions	mountable in any position
Ambient temperature	-5 to +50 °C
Mass valve	0.3 kg

Hydraulic

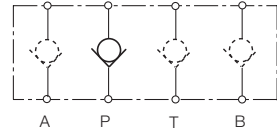
Operation pressure	max. 315 bar
Hydraulic oil temperature	-5 to +70 °C
Viscosity range	10 to 300 mm ² /s
max. flow	30 l/min
Opening pressure	1 bar (option 0.5 bar)

Symbol

configuration 1



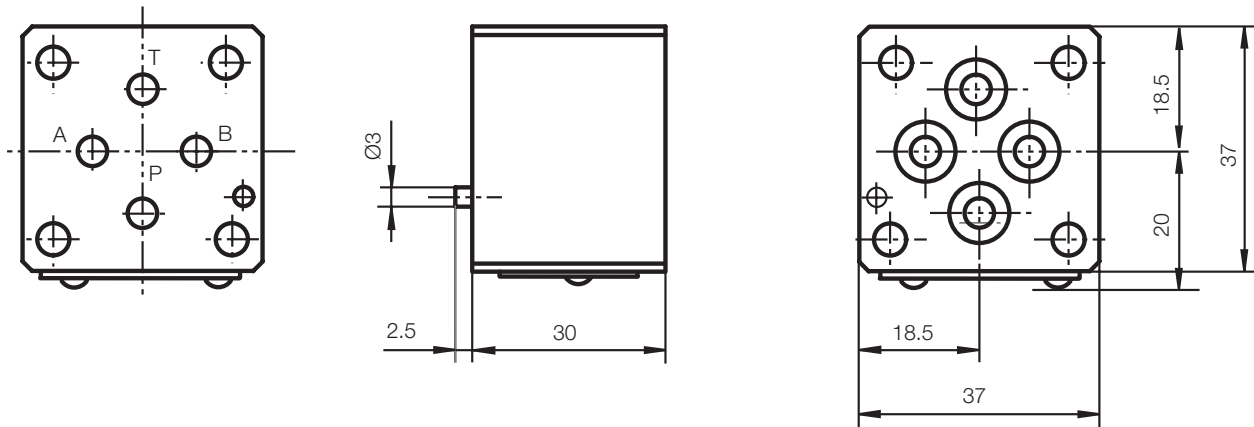
configuration 2



Features

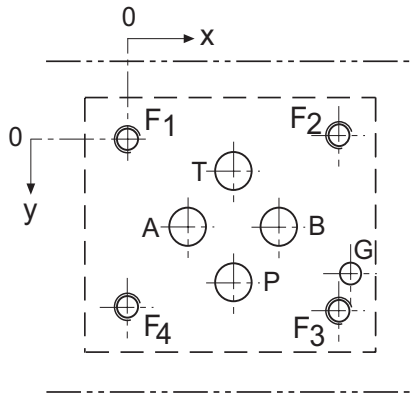
- hermetically closed seat valve
- low flow resistance
- compact design
- freely selectable canal and direction of check

Dimensional Drawing



dimensions in mm

Port Connection Pattern NG 4 ISO 4401



view: fastening side of mounting plate

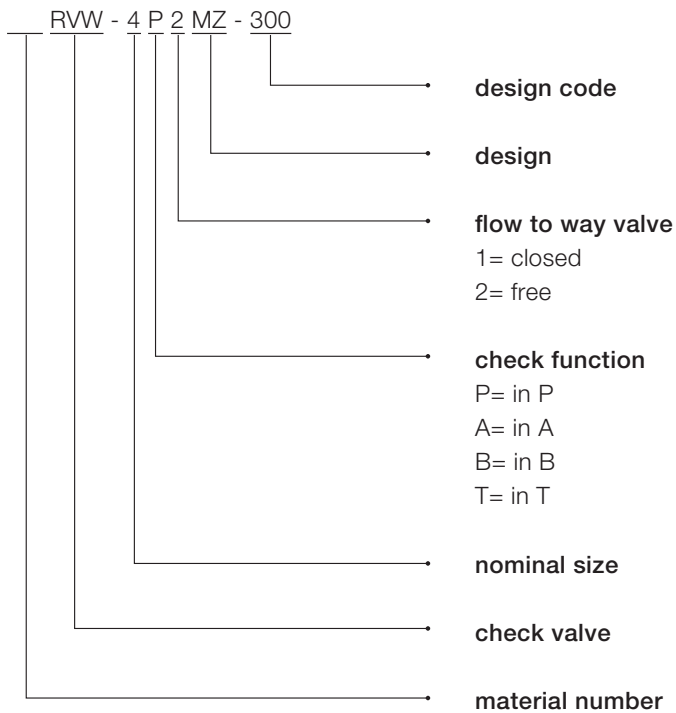
	P	A	T	B	F1	F2	F3	F4	G
Ø max [mm]	4.5	4.5	4.5	4.5	-	-	-	-	3.4
x [mm]	12	4.3	12	19.7	0	24	24	0	26.5
y [mm]	20.25	11.25	2.25	11.25	0	-0.75	23.25	22.5	17.75

F: M5, thread depth min. 1.5 x Ø

G: bore hole depth min. 1.5 x Ø

Various single and multiple mounting plates are available.

Type Code



Voith Turbo H + L Hydraulic GmbH & Co. KG
Schuckertstraße 15
71277 Rutesheim, Germany
Tel. +49 7152 992 3
Fax +49 7152 992 400
sales-rut@voith.com
www.voith.com/hydraulic-systems



VOITH
Engineered Reliability