

## Check Valve, piloted NG 4 ISO 4401 sandwich-plate Technical Data Sheet



## Technical Data

### General

Type of valve	seat valve, spring-loaded
Mounting method	sandwich plate
Mounting positions	mountable in any position
Ambient temperature	-5 to +50 °C
Mass valve	0.4 kg

### Hydraulic

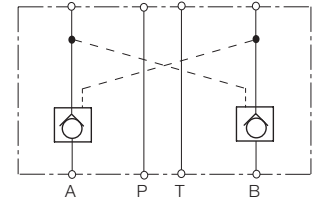
Operation pressure	max. 315 bar
Hydraulic oil temperature	-5 to +70 °C
Viscosity range	10 to 300 mm <sup>2</sup> /s
max. flow	characteristic curve
Control ratio	3,3:1

### Features

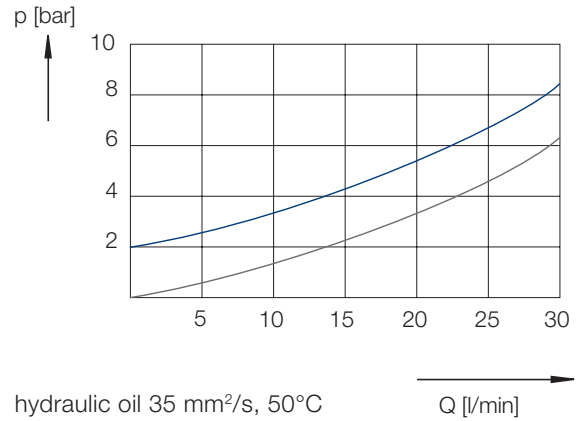
- hermetically closed seat valve
- compact design
- soft switch with forebalancing

## Symbol

RVY

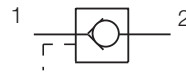


## Characteristic Curve

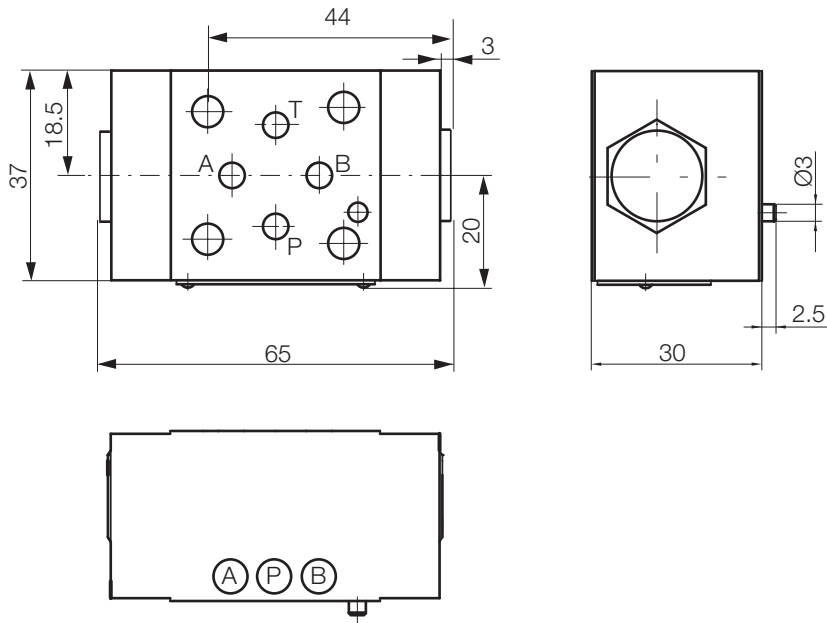


— 2 → 1

— 1 → 2

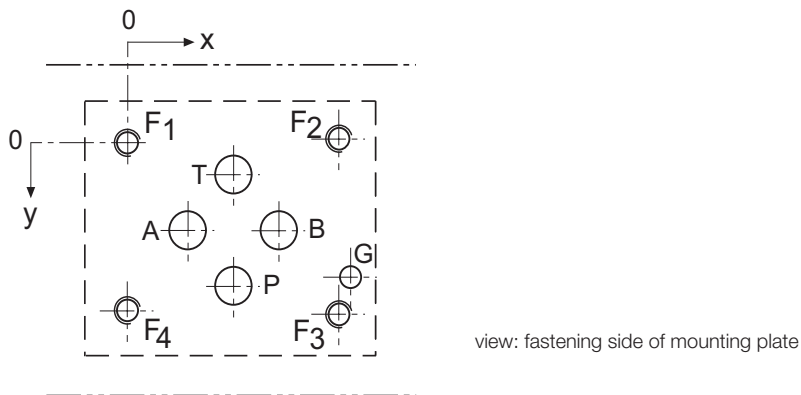


## Dimensional Drawing



Abmessungen in mm

## Port Connection Pattern NG 4 ISO 4401



	P	A	T	B	F1	F2	F3	F4	G
Ø max [mm]	4.5	4.5	4.5	4.5	-	-	-	-	3.4
x [mm]	12	4.3	12	19.7	0	24	24	0	26.5
y [mm]	20.25	11.25	2.25	11.25	0	-0.75	23.25	22.5	17.75

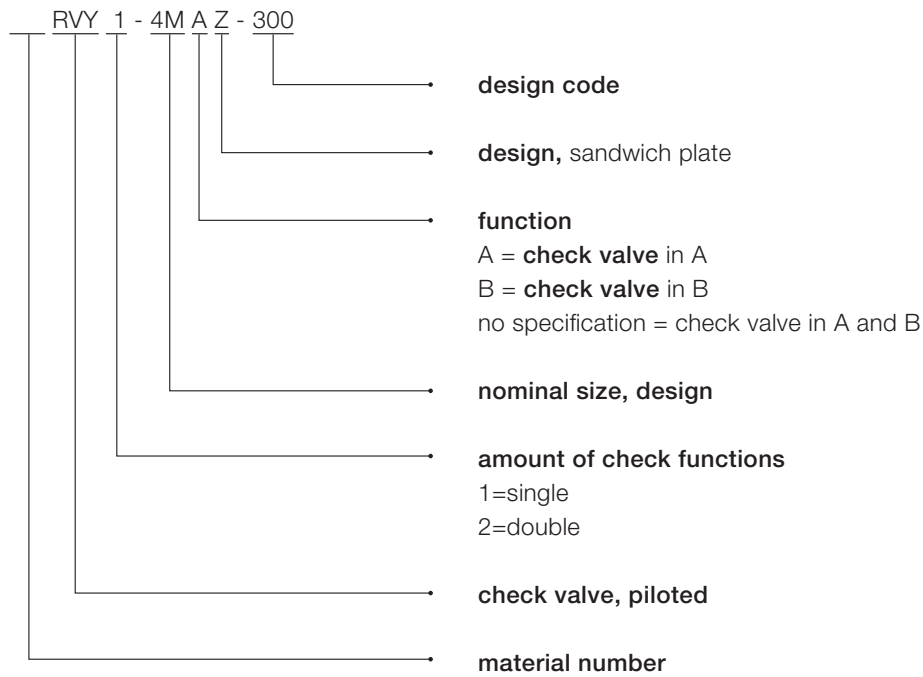
F: M5, thread depth min. 1.5 x Ø

G: bore hole depth min. 1.5 x Ø

Various single and multiple mounting plates are available.

## Type Code

---



Voith Turbo H + L Hydraulic GmbH & Co. KG  
Schuckertstraße 15  
71277 Rutesheim, Germany  
Tel. +49 7152 992 3  
Fax +49 7152 992 400  
sales-rut@voith.com  
[www.voith.com/hydraulic-systems](http://www.voith.com/hydraulic-systems)



**VOITH**  
Engineered Reliability