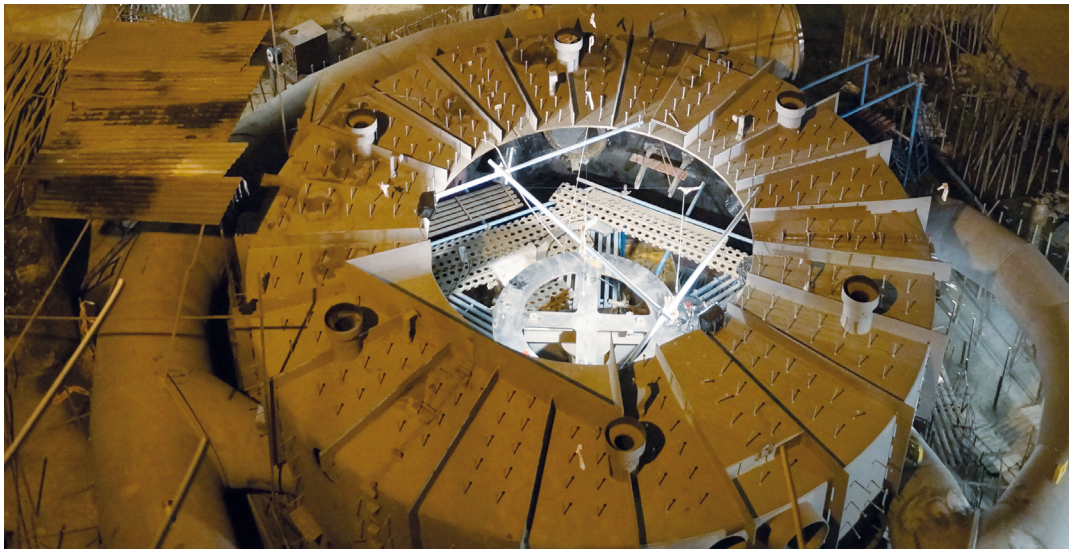


Project Fact Sheet. Sainj – 100 MW Hydro Electric Power Plant



The 100 MW Sainj hydroelectric project is being constructed by the state-run Himachal Pradesh Power Corporation Limited (HPPCL) in Kullu district in the state of Himachal Pradesh, India. Sainj HEP is a run of the river project on Sainj river – a tributary of Beas River. The project is scheduled for commissioning in 2015.

Voith Hydro is responsible for execution of complete scope of Electro-mechanical works on turnkey basis which broadly consists of Engineering, Procurement, Installation, testing and commissioning of 2 generating units each of 50 MW with its ancillaries and balance of plant equipment.

Key Features

Turbine

| | |
|-------------------------------|-------------------------|
| Turbine type | Vertical Pelton |
| Number of units | 2 |
| Nominal rated output per unit | 51.144 MW |
| Rated speed | 375 rpm |
| Rated net head | 397.36 m |
| Runner diameter | 2762 mm |
| Rated discharge | 14.35 m ³ /s |

Generator

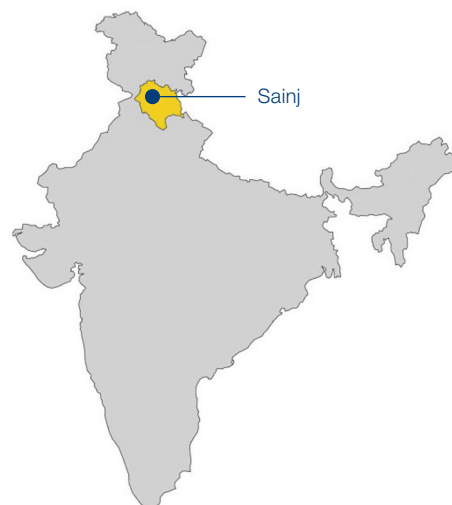
| | |
|--------------------|-----------|
| Rated output | 55.56 MVA |
| Rated power factor | 0.9 |
| Rated voltage | 11 kV |

Major auxiliaries including

| | |
|--------------------|--------------|
| Switchyard voltage | 400 KV (GIS) |
| No. of bays | 05 |
| Main Inlet Valves | 02 |

Station & Auxiliary Transformers,
Cable & Cable carrier system,
MV & LV Switchgear, EOT Crane

Location



Voith Hydro Pvt. Ltd.
A-20 & 21, Sector-59,
Noida – 201 301 (UP/India)
Tel. +91 12 03 07-42 42
Fax +91 12 03 07-42 43
hydro.india@voith.com
vhnsales@voith.com
www.voith.com

VOITH