

The perfect infrared emitter for your specific requirement

Outstanding heat transfer solutions



Voith is the only provider in the whole paper and non-woven industry offering a complete range of non-contact drying and web guiding components including high-efficient infrared systems. Our innovative product portfolio combines outstanding performance and highest reliability.

Manufacturers of coated grades are faced with increasing demands for higher productivity, stricter regulations and lower operating costs. At the same time, process efficiency must continuously improve. That is why our dedicated engineers continuously work to support our customers with innovative emitters to ensure maximum performance and highest availability.

K6500 – The robust emitter

For positions next to coaters where harsh conditions occur, the robust K6500 is your perfect choice, because the gas nozzles are optimally protected against outer influences. The emitter plates woven in the metal grid are arranged directly above the nozzles. This optimizes the heat transfer while simultaneously protecting the gas nozzles from splashes.

V6 – The economic emitter

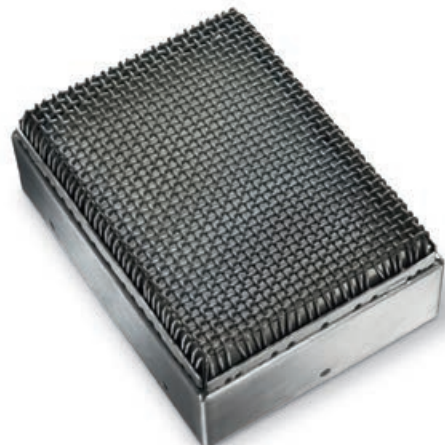
If your focus lies on cost-saving versatility, our economic solution V6 is the perfect choice. The combination of ceramic material used for the nozzle plate and the fine-meshed metal grid protecting the surface makes this low-cost emitter very popular among our customers. The V6 grid design minimizes the frame effect, ensures a very homogenous heat transfer and unfolds a high overall efficiency.

K6500 – Specially designed for

- **demanding environments (splashes, shock, air streams)**
- **cross-directional profiling**
- **perfect energy transfer leading to low operating costs**
- **all typical gas types due to its special gas nozzle design**

V6 – Specially designed for

- **maximum cost efficiency**
- **applications demanding long lifetime**
- **reliable operation due to energy-optimized grid design**





V8 – The high-power emitter

Due to its high temperature resistant front, consisting of metal bars, the V8 emitter combines robustness and high power over a long lifetime. It is ideally suited for applications where very intensive infrared drying is required and space for drying is limited. The V8 emitter can be used in all kinds of installation positions.

HelioX – Welcome the new generation

HelioX provides outstanding performance based on the special geometry of the emitting body. As the first of its kind, the emitter structure of HelioX is manufactured by advanced 3D print technology, achieving unmatched values for efficiency, combustion quality, lifetime and safety.

V8 – Specially designed for

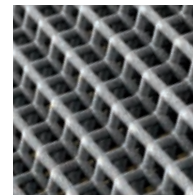
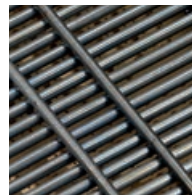
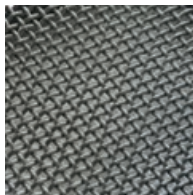
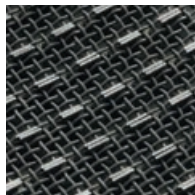
- high-power applications at maximum temperatures
- long lifetime applications
- demanding conditions (e.g., web breaks)
- homogenous heat transfer due to special frame design

HelioX – Specially designed for

- high-power applications
- minimum emissions and optimal combustion due to increased surface geometry (TOC, NO_x)
- highest thermal efficiency through maximized internal energy exchange
- low fire risk due to fast cool-down and heat-up



Complete range of infrared emitters



| | K6500 | V6 | V8 | HelioX |
|------------------------|-------------------------------|------------------------------|------------------------------|------------------------------|
| Input power | up to 6kW | up to 8kW | up to 8kW | up to 14kW |
| Type / Material | Metal emitter | Ceramic emitter | Ceramic emitter | Ceramic emitter |
| Front | Metal grid with nozzle plates | Fine metal mesh | Metal rods | Ceramic cell structure |
| CD profiling | 1 – 100 % stepless | – | – | – |
| Dimension | 150 x 200 mm | 150 x 200 mm 143 x 204 mm | 150 x 200 mm 143 x 204 mm | 150 x 200 mm 143 x 204 mm |

With decades of experience in gas-heated infrared emitters, Voith has developed an infrared emitter portfolio that meets the requirements of each specific application. Long service life and low life cycle costs ensure an economic operation of the emitters. Voith infrared dryers provide a very uniform and intensive heat transfer to the freshly coated paper, thus ensuring fast immobilization of the coat on the web. Drying intensity is adjusted according to the respective paper or board grade to achieve optimal results.

Voith can look back on more than 40 years of dedication in non-contact drying with air and infrared systems. All infrared emitters are available for Voith and third-party applications.

Service for maximum availability

Voith's non-contact drying service experts are located worldwide to support our customers with maintenance, optimization and upgrades.
Voith service expertise ensures highest availability.

Voith Group
 St. Poeltener Str. 43
 89522 Heidenheim
 Germany

www.voith.com/emitter

Contact:
 Phone +49 2166 988-0
drying@voith.com



VOITH
 Inspiring Technology
 for Generations