

Ensure the performance of your vacuum system

Vacuum pump refurbishment



Your value

- + Maintained and improved vacuum pump performance
- + Reduced energy and water usage
- + On-site inspections and measurements by local service specialists
- + Overhaul of aggregates according to technological demands
- + As OEM supplier of water ring vacuum pumps, Voith has a high level of know-how
- + Refurbishment available for all types, sizes and brands

Voith Paper – your reliable service partner

Water ring vacuum pumps are vital elements in the successful and efficient operation of a paper machine. As a professional and maintenance partner, we offer cost-effective solutions to safeguard energy efficiency and optimize the performance of vacuum systems. Besides equipment refurbishment we focus on preventive maintenance activities to minimize the impact caused by wear and corrosion arising from long operating periods, which can compromise equipment and process integrity.

We provide on-site periodic measurement services and full-scope refurbishments in our workshops – including repairs on rotors and housings, reapplication of special coatings and refabricate of parts. We offer the services for all types, sizes and brands of vacuum pumps.

Maximum operational safety through preventive measures

Productivity, efficiency and availability of customer operations are priorities for Voith. Our vacuum and airflow measurement services assess the mechanical and operating status of vacuum pumps. By periodically checking the operational values demanded by your system, we can assess its performance. Voith's assessment services are particularly recommended for vacuum pumps that have been in operation for more than 10 years, as they help predict events based on efficiency reductions.

On-site measurements

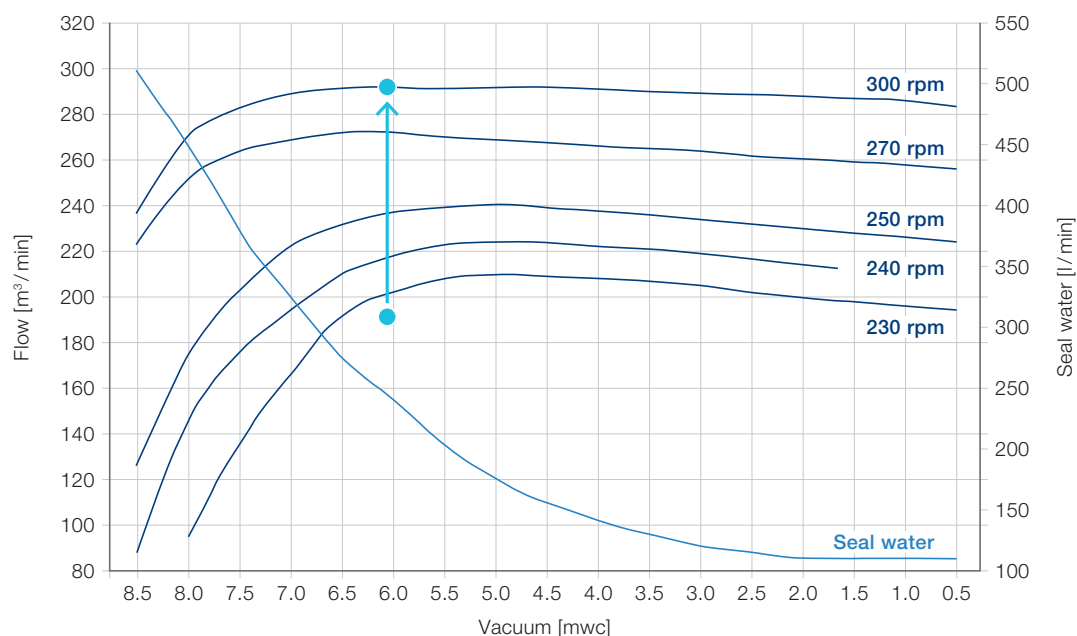
Voith's efficiency and airflow measurements for vacuum pumps offer the following valuable benefits:

1. Check whether the vacuum pump's operating point meets its rated capacity
2. Diagnose problems and conduct repairs or component replacements promptly, thereby reducing the risk of unexpected machine downtime and, consequently, of production losses
3. Perform measurements with the vacuum pump in operation, without the need for significant machine preparation or intervention; Voith takes care of the entire process from previously defining the locations for installing the connecting sleeves for the probes all the way to the in-depth analysis
4. Ensure greater control and operability for the vacuum system
5. Create opportunities to optimize pumps and secure energy savings by tracking measured values and airflow stability

Scope of our vacuum pump on-site measurements

- Installing measuring points during maintenance stop
- Measuring during normal operation
- Performance analysis and consultation conducted by Voith service specialists

An example of on-site measurement before and after the refurbishment of a Voith water ring vacuum pump





Equipment services

Maintenance

- Inspection
- Corrective maintenance
- Preventive maintenance
- Repair & refurbishment



Process services

Expert support / consulting

- Condition monitoring
- Maintenance

Full scope of services

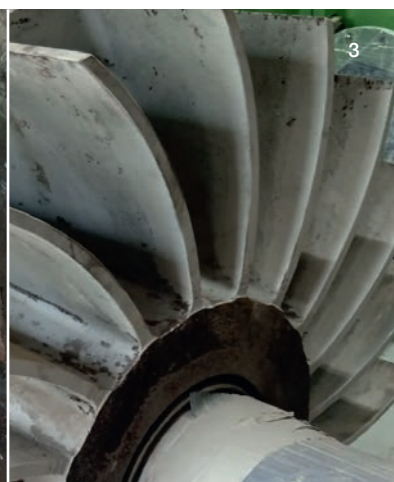
Voith has been producing and maintaining vacuum equipment for decades and has experience with hundreds of projects. Voith and non-Voith equipment are fully disassembled and assessed in our workshops. For reliable assessment of the pump, our technicians rely on the outstanding support of our global competence team.

Bearings, seals and other standard parts are exchanged as needed, and we are also able to repair brand-specific parts using 3D scanning and reverse engineering. Our skilled teams utilize various repair methods and techniques restoring the required geometry of, for example, the rotor of housing parts. By applying special procedure and methods, we are able to repair rotors and housing parts mostly by welding. After restore of the geometries, high wear- and corrosion-resistant coatings are applied to ensure reliability and durability of your equipment. All rotating parts are dynamically balanced with calibrated equipment.

The in-house repair of shaft and shaft sleeves is also part of our competence. The assembly of the vacuum pumps will be executed according to OEM specifications by experienced technicians under ideal conditions.

Depending on the location and availability, it may possible to rent a spare pump during the repair of your vacuum pump. Also, we offer attractive service contracts to our customers. Ask your local sales representative for more information.

- 1 Rotor before refurbishment
- 2 Rotor after welding and grinding
- 3 Rotor before apply coating
- 4 Rotor after refurbishment



Please click on this [link](#) or scan the QR code to visit our Equipment Service website:



Voith Group
St. Poeltener Str. 43
89522 Heidenheim
Germany

www.voith.com

How can we support you?
Just contact us via our **webform**.



Contact:
Phone +49 7321 37-9255
paper@voith.com



VOITH